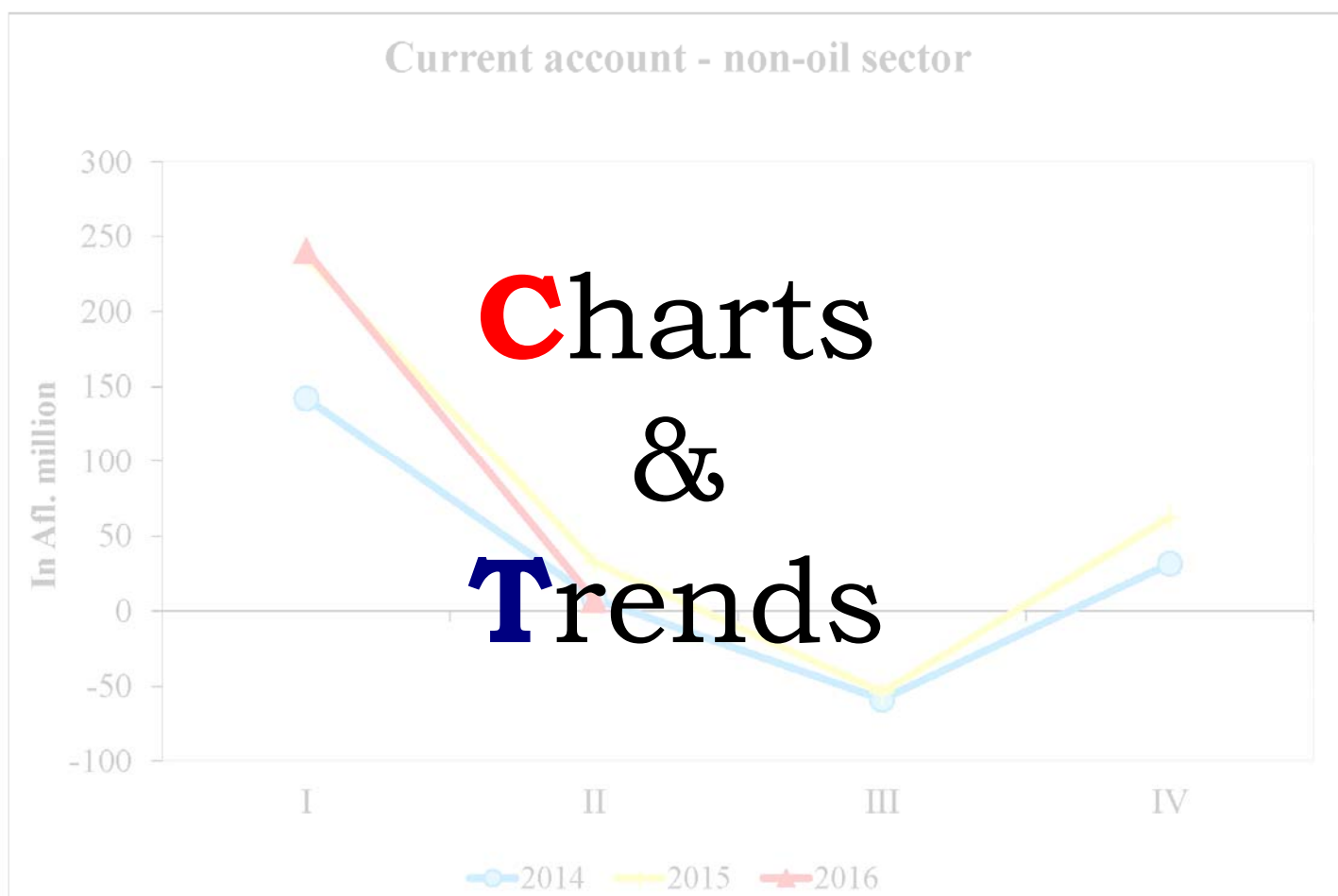




CENTRALE BANK VAN ARUBA



Research Department
December 2, 2016

Sources (in alphabetical order):

- Aruba Airport Authority N.V.
- Aruba Gas Supply N.V.
- Aruba Hotel & Tourism Association
- Aruba Port Authority N.V.
- Aruba Stevedoring Company (ASTECC) N.V.
- Aruba Tourism Authority N.V.
- Bureau of Labor Statistics of the U.S. Department of Labor
- Centrale Bank van Aruba
- Centraal Bureau voor de Statistiek (the Central Bureau of Statistics)
- Conference Board
- Cruise Tourism Authority
- Department of Finance
- Directie Economische Zaken Handel en Industrie (the Department of Economic Affairs, Commerce and Industry)
- Federal Reserve Bank of St. Louis
- Food and Agriculture Organization of the United Nations
- International Monetary Fund
- N.V. Elektriciteit-Maatschappij Aruba
- Sociale Verzekeringsbank (the Social Security Bank)
- Tax Collector's Office
- The London Bullion Market Association
- Thomson Reuters/University of Michigan
- Water- en Energie Bedrijf "Aruba" N.V.

Contents

1	Real sector		1.44	Real gambling licenses - lagged on month	1-9
1.1	Nominal turnover tax (BBO)	1-3	1.45	Water	1-10
1.2	Real turnover tax (BBO) - lagged one month	1-3	1.46	Electricity	1-10
1.3	Nominal wage tax	1-3	1.47	Gas	1-10
1.4	Real wage tax - lagged one month	1-3	1.48	Container transport ASTEC	1-10
1.5	Inflation Aruba (<i>Twelve-month average</i>)	1-4	1.49	Unleaded premium gasoline prices	1-10
1.6	Inflation Aruba (<i>End of period</i>)	1-4	1.50	Diesel prices	1-10
1.7	Inflation differential 12-month average and end of period	1-4	1.51	New commercial water connection	1-10
1.8	Inflation USA (<i>Twelve-month average</i>)	1-4	1.52	New commercial water disconnection	1-10
1.9	Inflation differential Aruba with USA (<i>Twelve-month average</i>)	1-4	2	Monetary sector	
1.10	Aruba inflation excluding energy and food (<i>Twelve-month average</i>)	1-4	2.1	Nominal money supply (<i>End of period</i>)	2-3
1.11	Aruba inflation excluding energy (<i>Twelve-month average</i>)	1-4	2.2	Real money supply (<i>End of period</i>)	2-3
1.12	USA inflation excluding energy (<i>Twelve-month average</i>)	1-4	2.3	Nominal net domestic assets (<i>End of period</i>)	2-3
1.13	Aruba-Food and non-alcoholic beverage (<i>Twelve-month average</i>)	1-5	2.4	Real net domestic assets (<i>End of period</i>)	2-3
1.14	Aruba-Housing (<i>Twelve-month average</i>)	1-5	2.5	Nominal net foreign assets Including revaluation differences (<i>End of period</i>)	2-3
1.15	Aruba-Household operation (<i>Twelve-month average</i>)	1-5	2.6	Real net foreign assets Including revaluation differences (<i>End of period</i>)	2-3
1.16	Aruba-Transport (<i>Twelve-month average</i>)	1-5	2.7	Nominal net foreign assets Excluding revaluation differences (<i>End of period</i>)	2-3
1.17	Aruba-Food component (<i>Twelve-month average</i>)	1-5	2.8	Real net foreign assets Excluding revaluation differences (<i>End of period</i>)	2-3
1.18	USA-Food component (<i>Twelve-month average</i>)	1-5	2.9	Nominal total credit (<i>End of period</i>)	2-4
1.19	Aruba-Maintenance and repair of the dwelling (<i>Twelve-month average</i>)	1-5	2.10	Real total credit (<i>End of period</i>)	2-4
1.20	Workers' remittances payments	1-6	2.11	Nominal consumer credit (<i>End of period</i>)	2-4
1.21	Population	1-6	2.12	Real consumer credit (<i>End of period</i>)	2-4
1.22	AZV-receipts	1-6	2.13	Number of new consumer credit (<i>During period</i>)	2-4
1.23	AOV/AWW-receipts	1-6	2.14	Total amount of new consumer credit (<i>During period</i>)	2-4
1.24	Stay-over visitors	1-7	2.15	Nominal average new consumer credit per lender (<i>During period</i>)	2-4
1.25	Visitor's nights	1-7	2.16	Real average new consumer credit per lender (<i>During period</i>)	2-4
1.26	Airport arrivals corrected for resident arrivals	1-7	2.17	Nominal housing mortgages (<i>End of period</i>)	2-5
1.27	Resident arrivals	1-7	2.18	Real housing mortgages (<i>End of period</i>)	2-5
1.28	Airline load factor	1-7	2.19	Number of new housing mortgages (<i>During period</i>)	2-5
1.29	Average nights stayed	1-7	2.20	Total amount of new housing mortgages (<i>During period</i>)	2-5
1.30	Cruise passengers	1-7	2.21	Nominal average new housing mortgages per lender (<i>During period</i>)	2-5
1.31	Ship calls	1-7	2.22	Real average new housing mortgages per lender (<i>During period</i>)	2-5
1.32	Occupancy rate-hotels	1-8	2.23	Nominal car loans (<i>End of period</i>)	2-5
1.33	Nominal revenue per available room-hotel	1-8			
1.34	Real revenue per available room-hotel	1-8			
1.35	Nominal average daily rate-hotel	1-8			
1.36	Real average daily rate-hotel	1-8			
1.37	Nominal tourism receipts	1-9			
1.38	Real tourism receipts	1-9			
1.39	Nominal tourism receipts (<i>Commercial banks and CBA</i>)	1-9			
1.40	Real tourism receipts (<i>Commercial banks and CBA</i>)	1-9			
1.41	Nominal hotel room tax/tourist levy	1-9			
1.42	Real hotel room tax/tourist levy - lagged one month	1-9			
1.43	Nominal gambling licenses	1-9			

2.24	Real car loans (End of period)	2-5	3.18	Transfer to AZV	3-5
2.25	Nominal commercial loans (End of period)	2-6	3.19	Expenditure cash adjusted basis	3-5
2.26	Real commercial loans (End of period)	2-6	4	External sector	
2.27	Number of new commercial mortgages (During period)	2-6	4.1	Overall balance of payments	4-3
2.28	Total amount of new commercial mortgages (During period)	2-6	4.2	Overall balance of payments-Oil sector	4-3
2.29	Nominal average new commercial mortgages per lender (During period)	2-6	4.3	Overall balance of payments-Non-oil sector	4-3
2.30	Real average new commercial mortgages per lender (During period)	2-6	4.4	Current account	4-3
2.31	Number of new commercial term loans (During period)	2-6	4.5	Current account-Oil sector	4-3
2.32	Total amount of new commercial term loans (During period)	2-6	4.6	Current account-Non-oil sector	4-3
2.33	Nominal average new commercial term loan per lender	2-7	4.7	Capital and financial account	4-3
2.34	Real average new commercial term loan per lender (During period)	2-7	4.8	Capital and financial account-Oil sector	4-3
2.35	Nominal savings deposits (End of period)	2-7	4.9	Capital and financial account-Non-oil sector	4-4
2.36	Real savings deposits (End of period)	2-7	4.10	Import payments of goods	4-4
2.37	Number of new savings deposits (During period)	2-7	4.11	Import payments of goods-Oil sector	4-4
2.38	Total of amount of new savings deposits (During period)	2-7	4.12	Import payments of goods-Non-oil sector	4-4
2.39	Weighted average rate on interest on deposits (During period)	2-7	4.13	Import payments of services	4-4
2.40	Weighted average rate on interest on loans (During period)	2-7	4.14	Import payments of services-Oil sector	4-4
2.41	Interest rate margin (During period)	2-8	4.15	Import payments of services-Non-oil sector	4-4
2.42	Weighted average yield on treasury bonds	2-8	4.16	Import payments of goods and services	4-4
2.43	Weighted average yield on treasury bills	2-8	4.17	Import payments of goods and services- Oil sector	4-5
2.44	Gross business loans on a weekly basis	2-9	4.18	Import payments of goods and services- Non-oil sector	4-5
2.45	Gross individual loans on a weekly basis	2-9	4.19	Merchandise import coverage ratio (End of period)	4-5
3	Public finance		4.20	Merchandise import coverage ratio (Twelve-month average)	4-5
3.1	Government revenue	3-3	4.21	Current account import coverage ratio (End of period)	4-5
3.2	Government expenditure	3-3	4.22	Current account import coverage ratio (Twelve-month average)	4-5
3.3	Government financial deficit (-)	3-3	5	Macro prudential indicators	
3.4	Government financial deficit (-) incl. change in unmet financing requirements	3-3	5.1	Capital/risk-weighted assets ratio	5-3
3.5	Outstanding domestic government debt	3-3	5.2	Loan/deposit ratio	5-3
3.6	Outstanding foreign government debt	3-3	5.3	Prudential liquidity ratio	5-3
3.7	Outstanding government debt	3-3	5.4	Nonperforming loans-commercial current account	5-4
3.8	Outstanding government debt to GDP ratio	3-3	5.5	Nonperforming loans-commercial term loans	5-4
3.9	Taxes on income	3-4	5.6	Nonperforming loans-commercial mortgages	5-4
3.10	Taxes on commodities	3-4	5.7	Nonperforming loans-individual mortgages	5-4
3.11	Foreign exchange tax	3-4	5.8	Nonperforming loans-individual other	5-4
3.12	Nontax revenue	3-4	5.9	Nonperforming loans-total loans	5-4
3.13	Wage expenditures	3-4	5.10	Commercial banks-nonperforming loans (Monthly figures)	5-4
3.14	Number of government employees	3-4	5.11	Nonperforming loans - Commercial banks & banklike institutions	5-5
3.15	Goods and services	3-4	6	International environment	
3.16	Interest	3-4	6.1	All commodities index-World	6-3
3.17	Investments (Incl. development fund spending)	3-5	6.2	Non fuel commodity index-World	6-3
			6.3	Energy index-World	6-3
			6.4	Oil prices	6-3
			6.5	Euro exchange rate (period average)	6-3
			6.6	Consumer confidence index-USA	6-3
			6.7	Unemployment rate-USA	6-3
			6.8	US coincident index	6-3
			6.9	Gold prices	6-4
			6.10	Food price index	6-4

1. Real sector

Chart 1.1

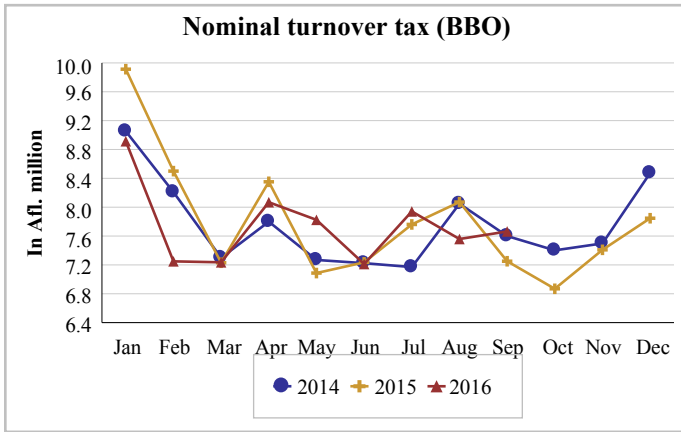


Chart 1.2

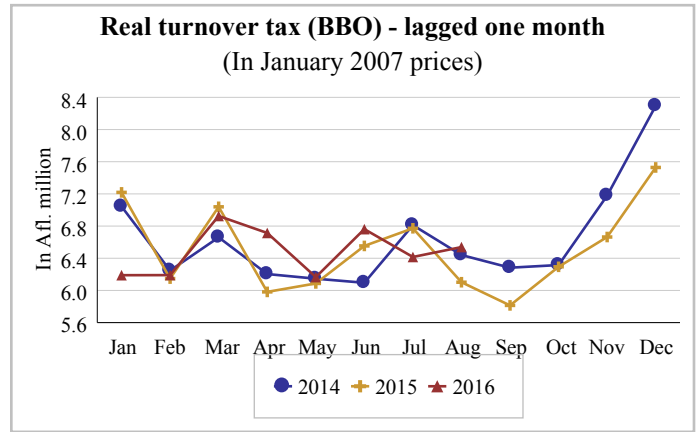


Chart 1.3

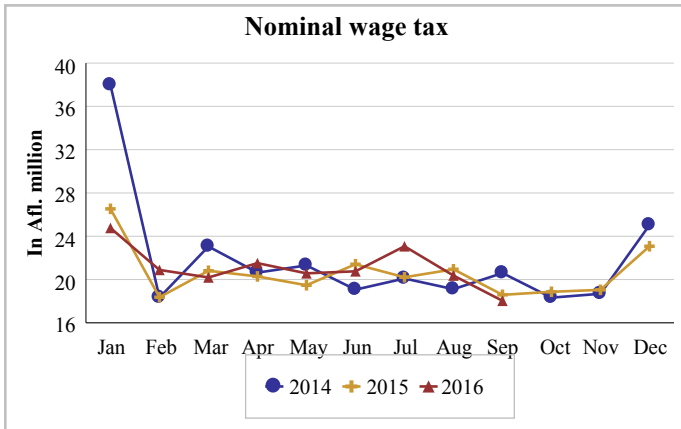


Chart 1.4

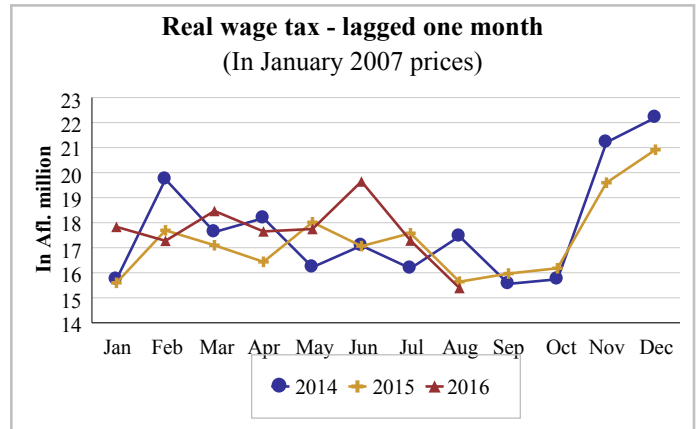


Chart 1.5

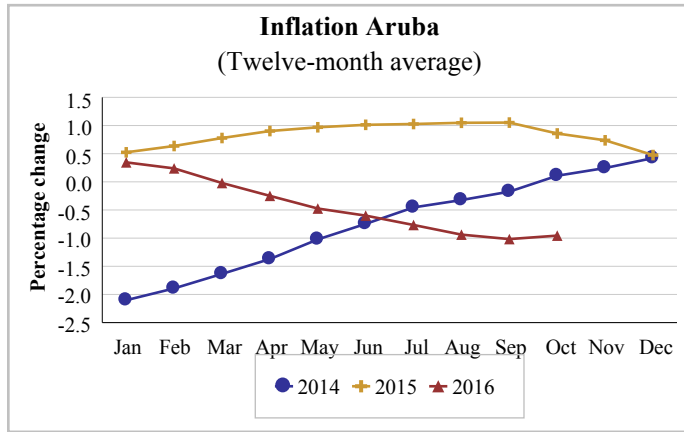


Chart 1.6

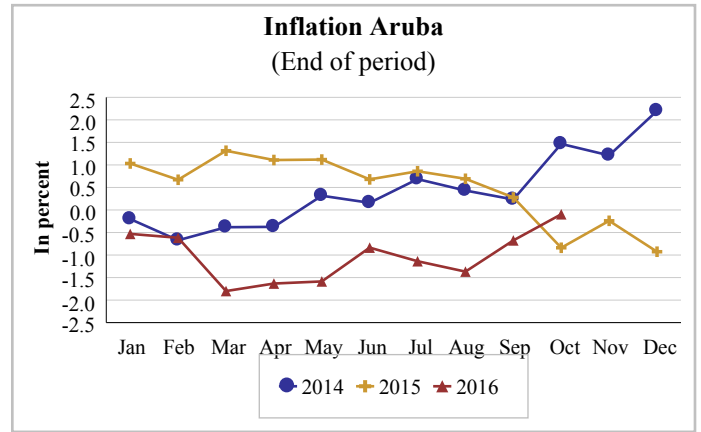


Chart 1.7

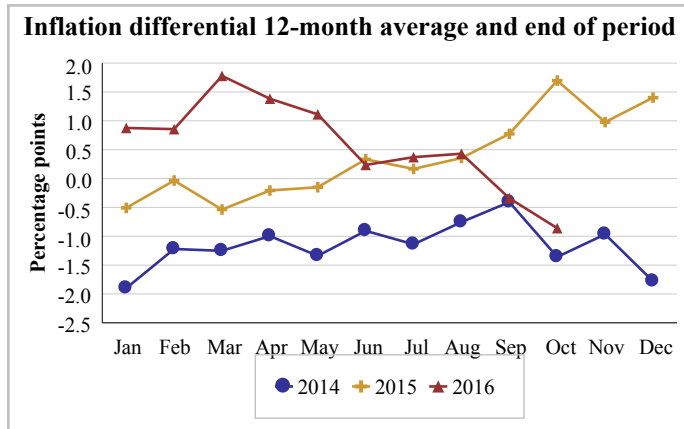


Chart 1.8

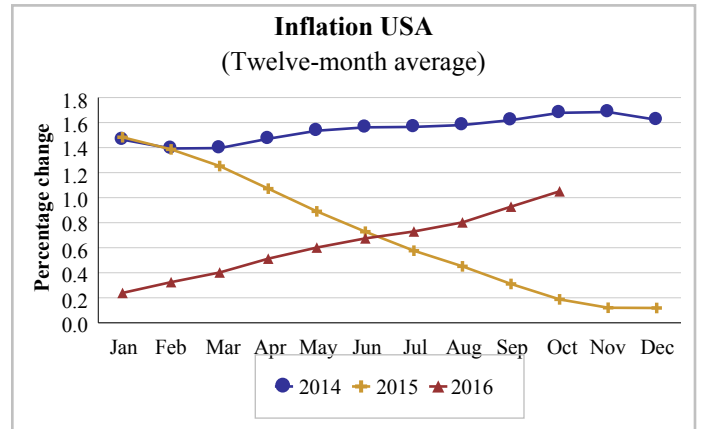


Chart 1.9

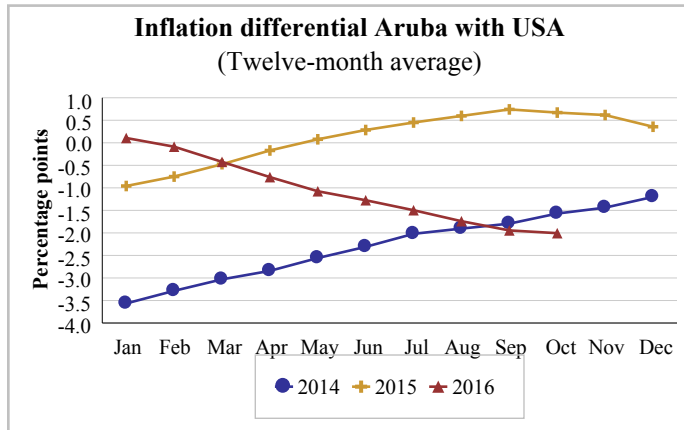


Chart 1.10

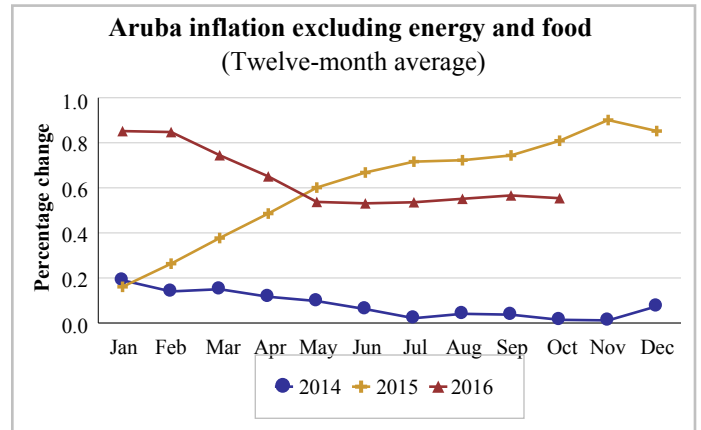


Chart 1.11

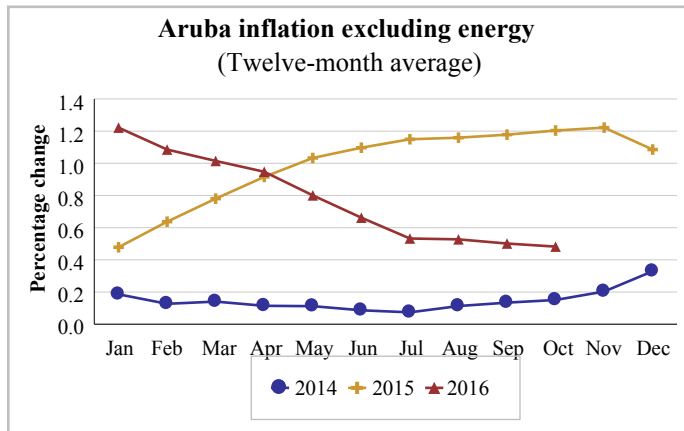


Chart 1.12

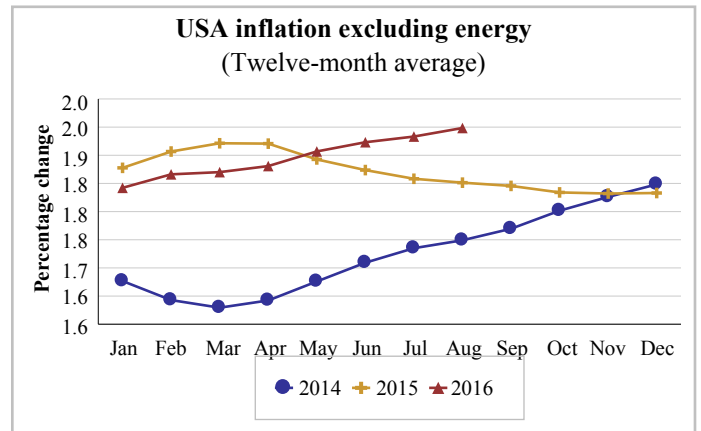


Chart 1.13

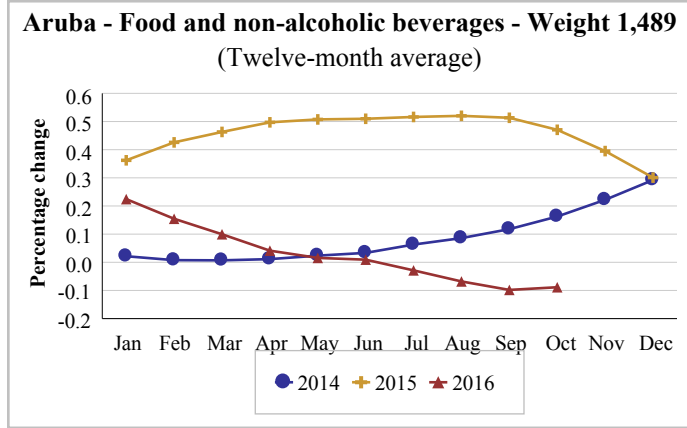


Chart 1.14

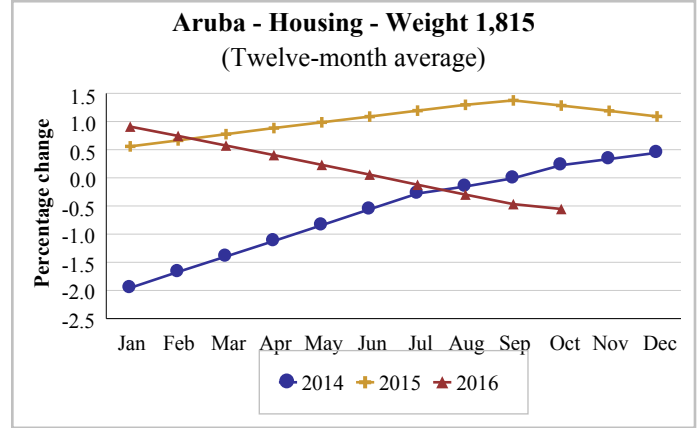


Chart 1.15

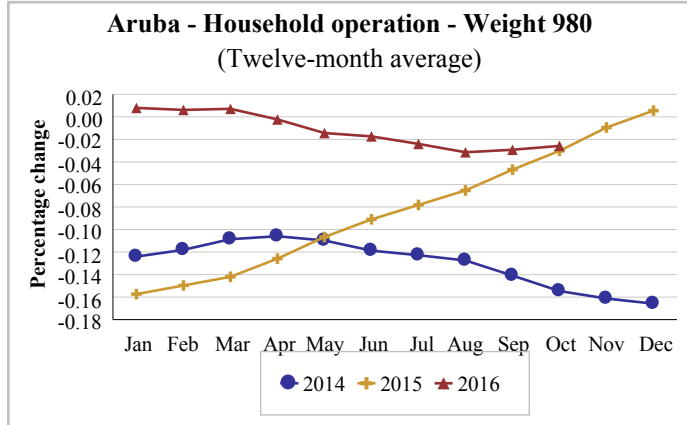


Chart 1.16

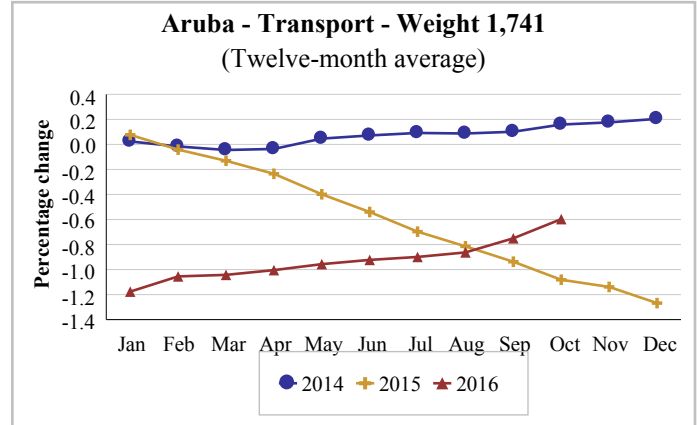


Chart 1.17

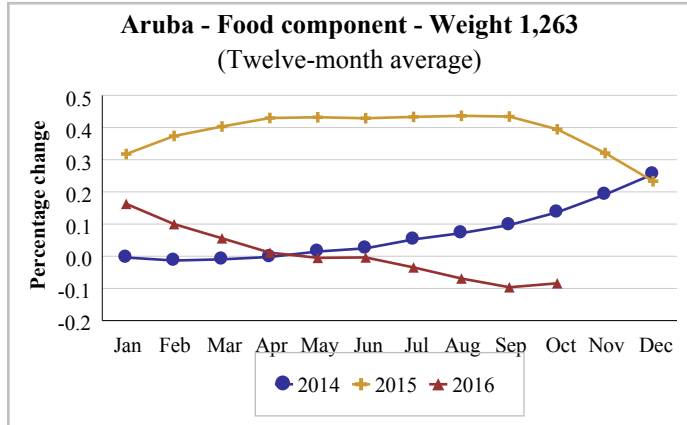


Chart 1.18

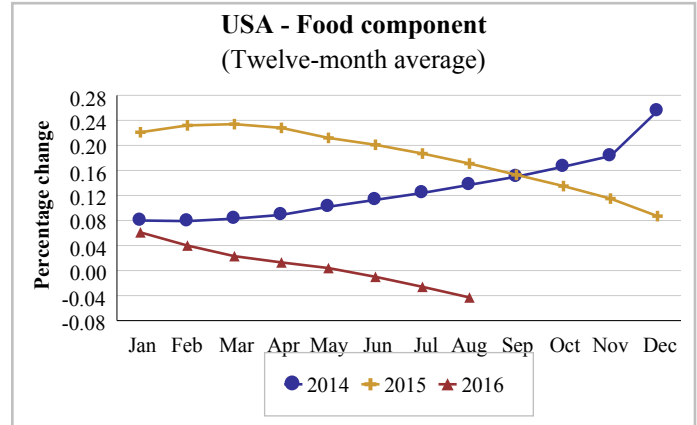


Chart 1.19

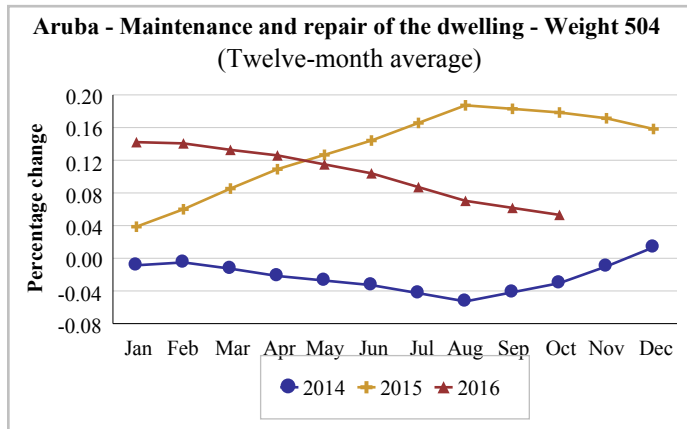


Chart 1.20

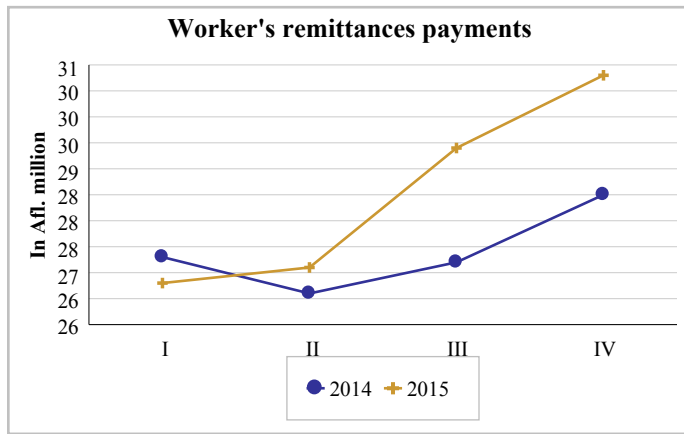


Chart 1.21

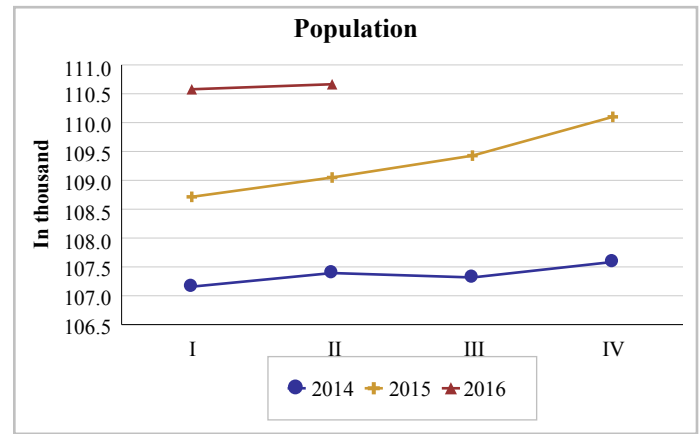


Chart 1.22

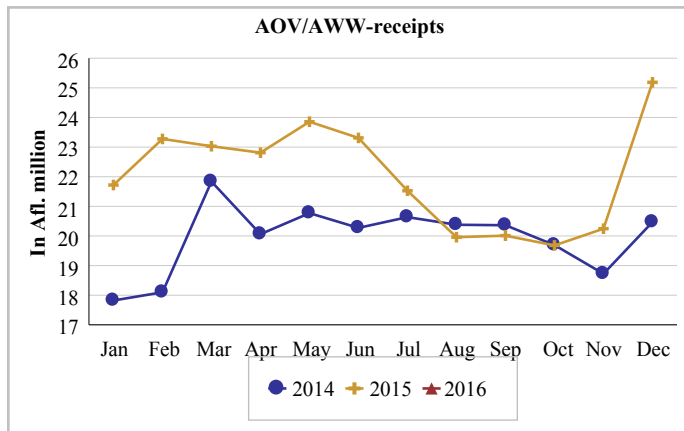


Chart 1.23

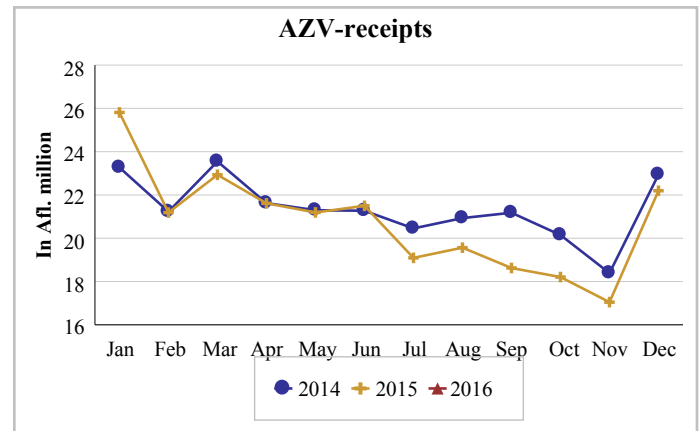


Chart 1.24

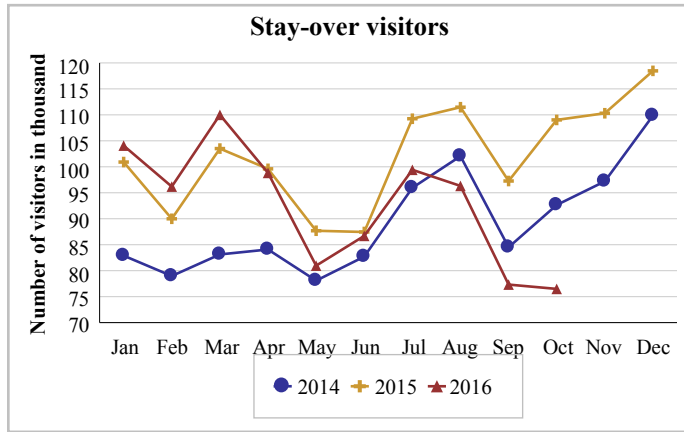


Chart 1.25

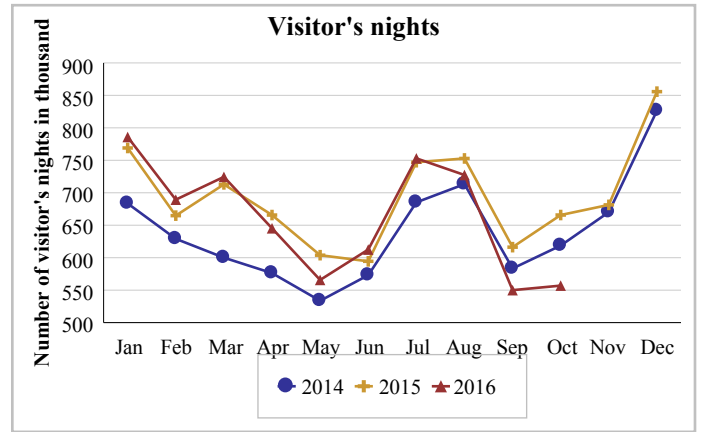


Chart 1.26

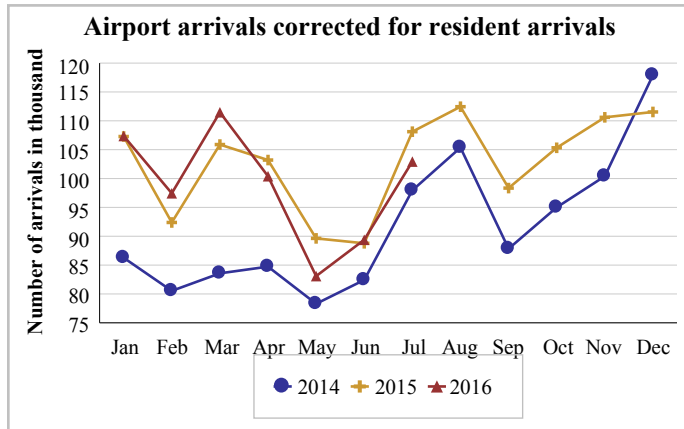


Chart 1.27

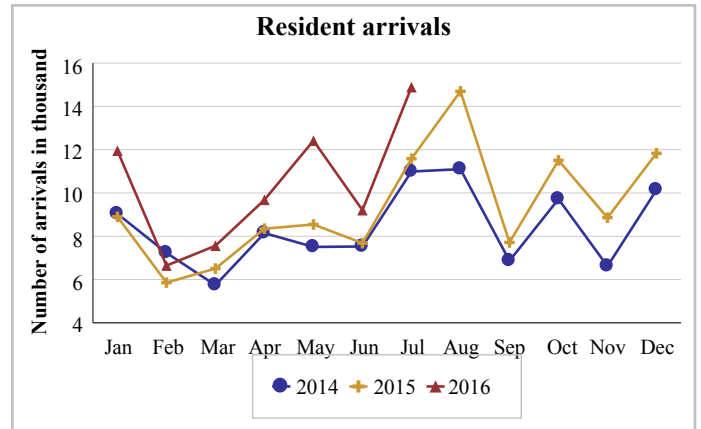


Chart 1.28

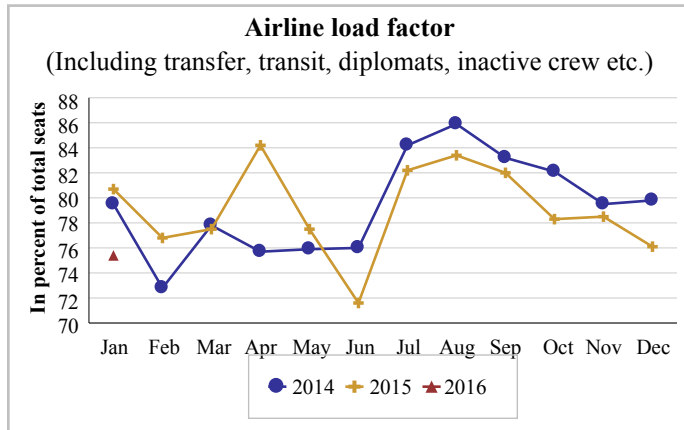


Chart 1.29

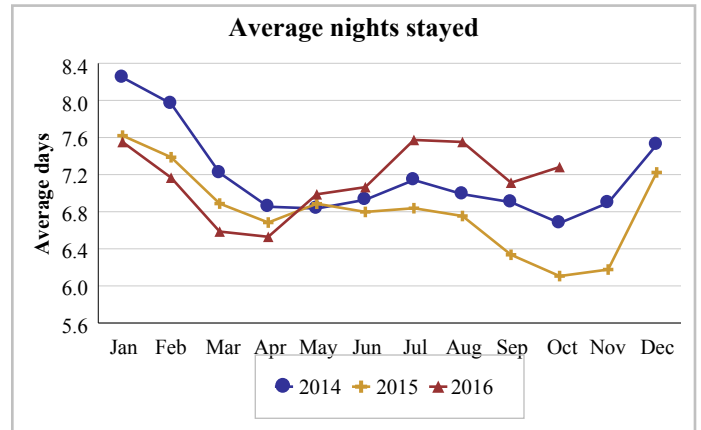


Chart 1.30

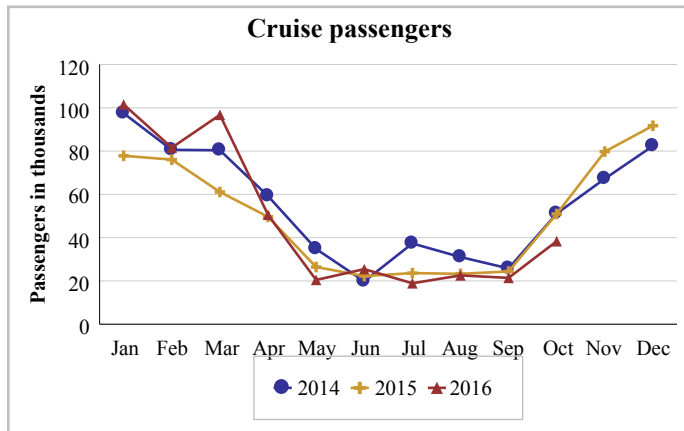


Chart 1.31

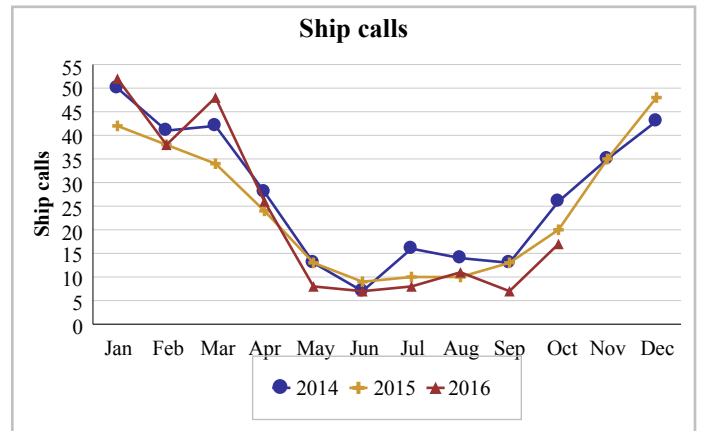


Chart 1.32

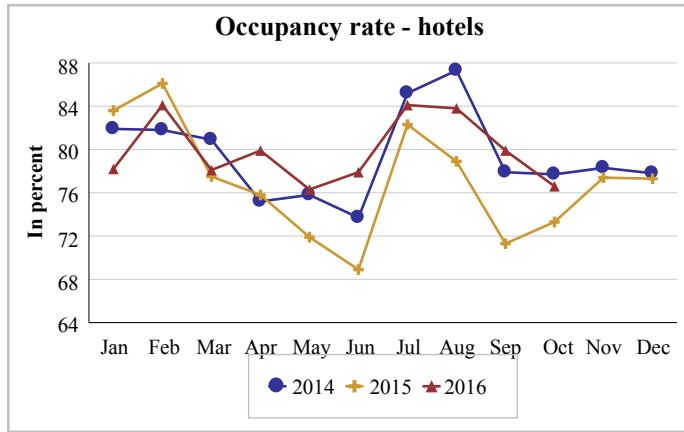


Chart 1.33

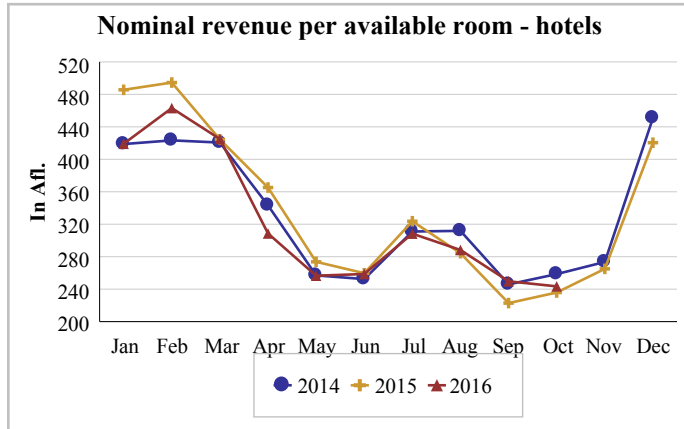


Chart 1.34

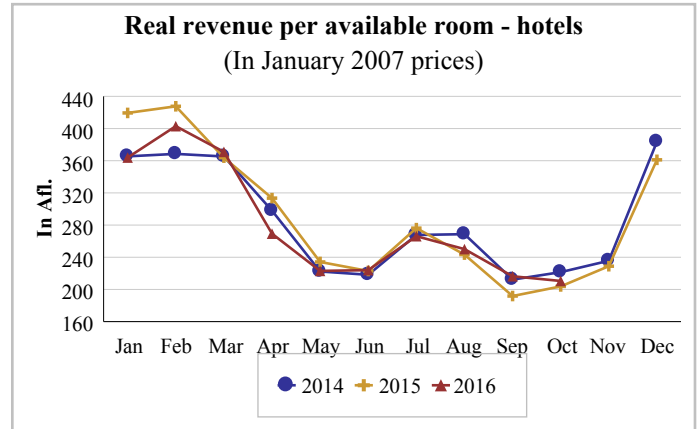


Chart 1.35

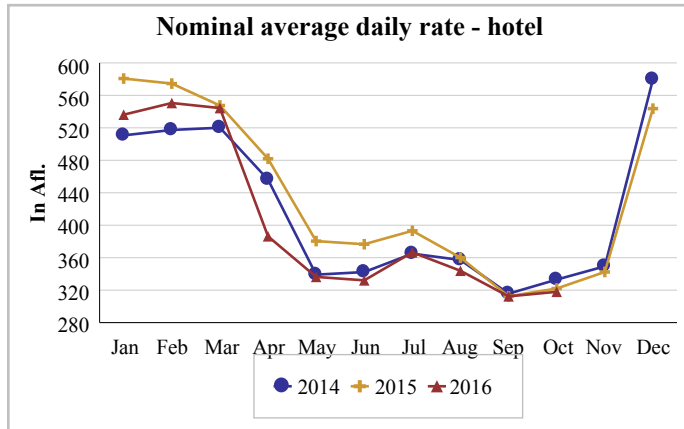


Chart 1.36

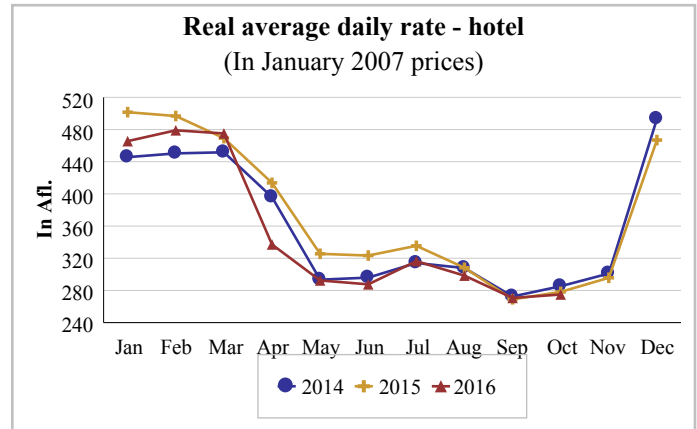


Chart 1.37

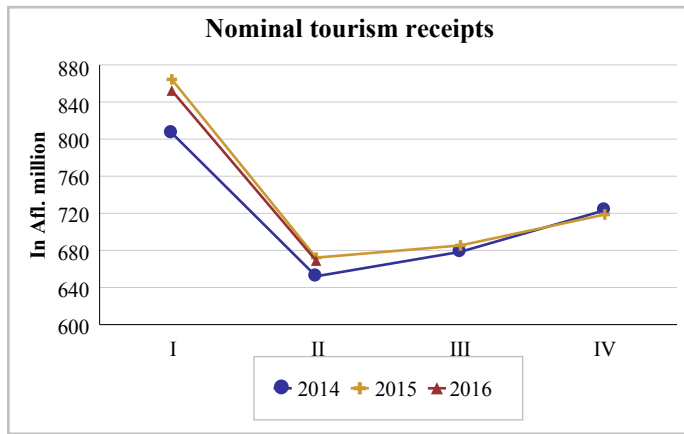


Chart 1.38

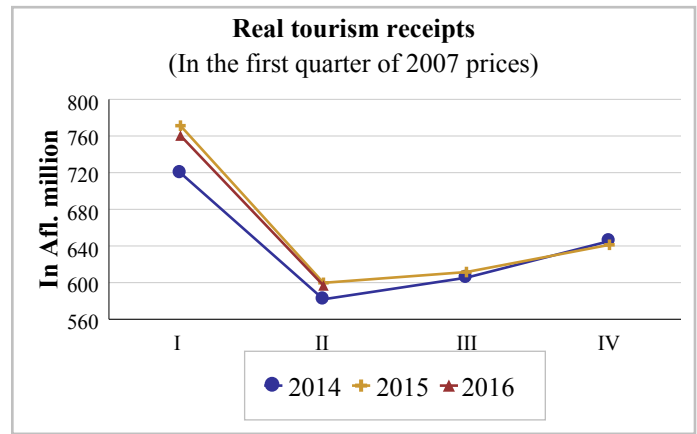


Chart 1.39

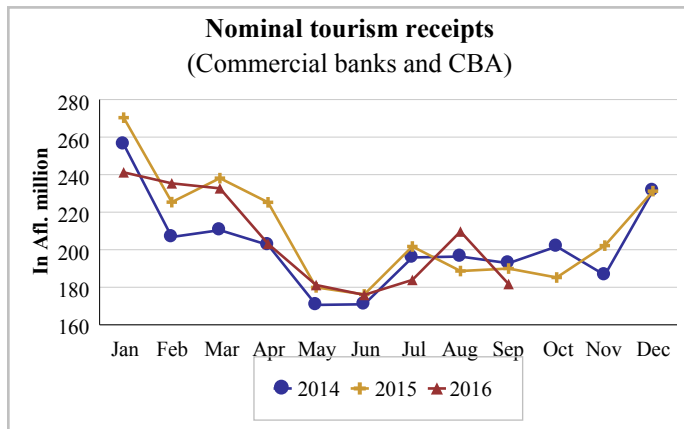


Chart 1.40

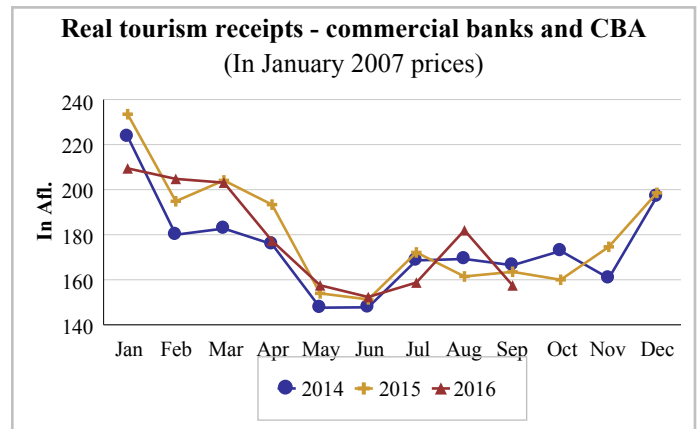


Chart 1.41

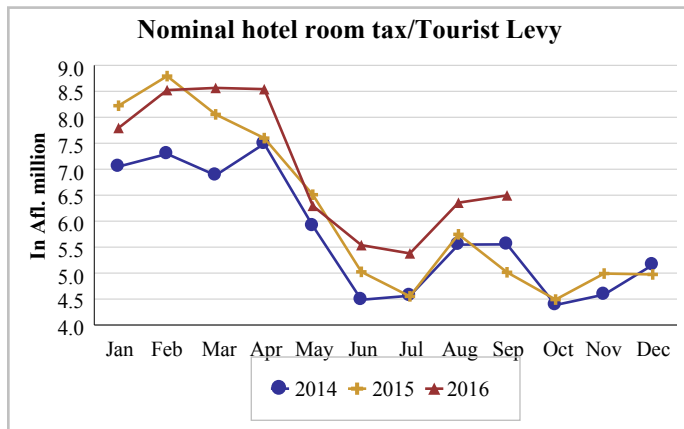


Chart 1.42

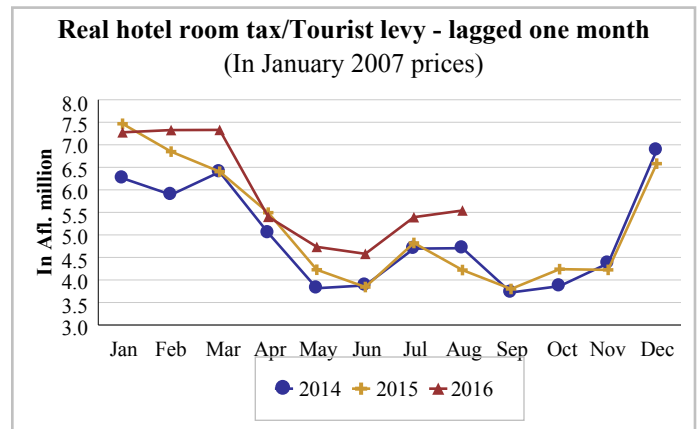


Chart 1.43

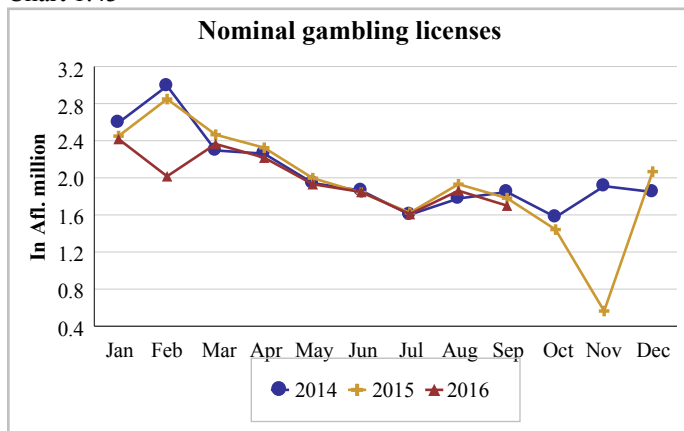


Chart 1.44

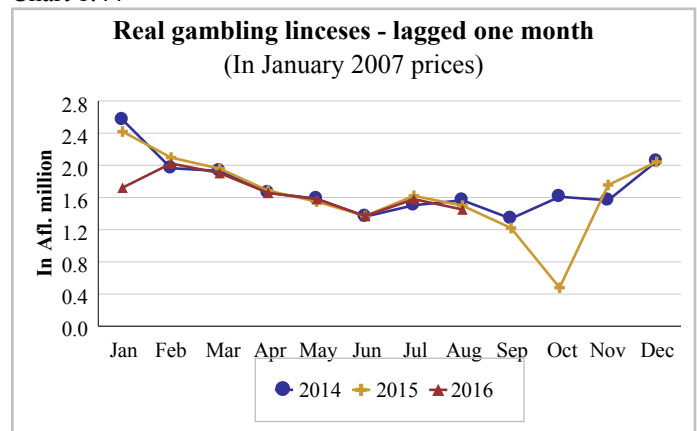


Chart 1.45

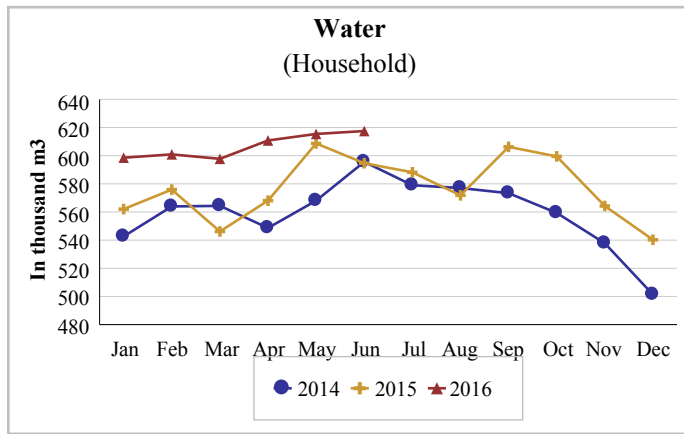


Chart 1.46

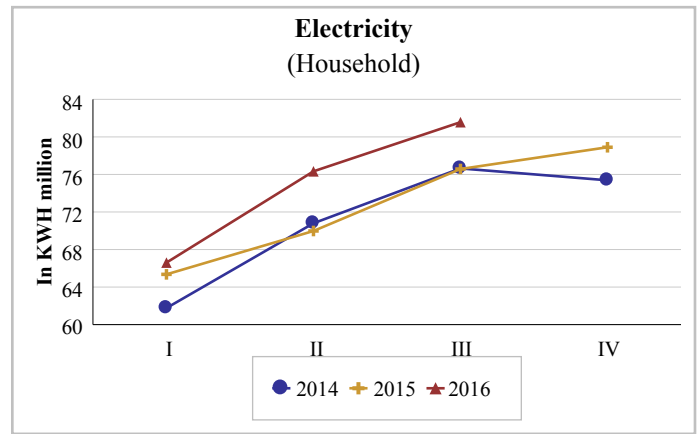


Chart 1.47

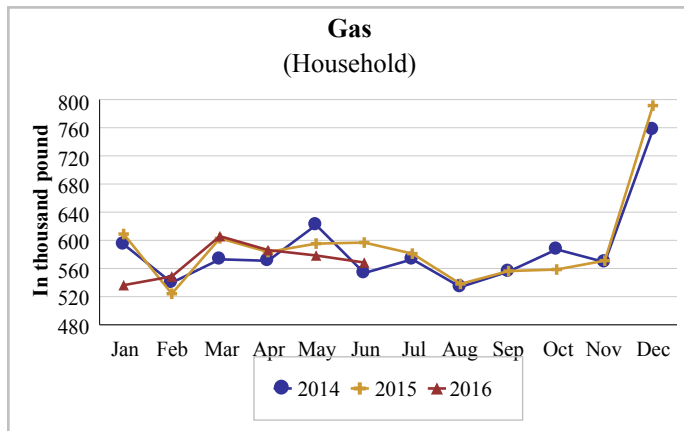


Chart 1.48

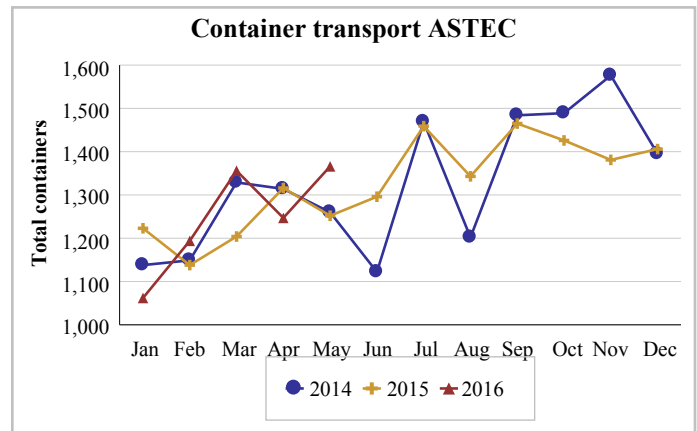


Chart 1.49

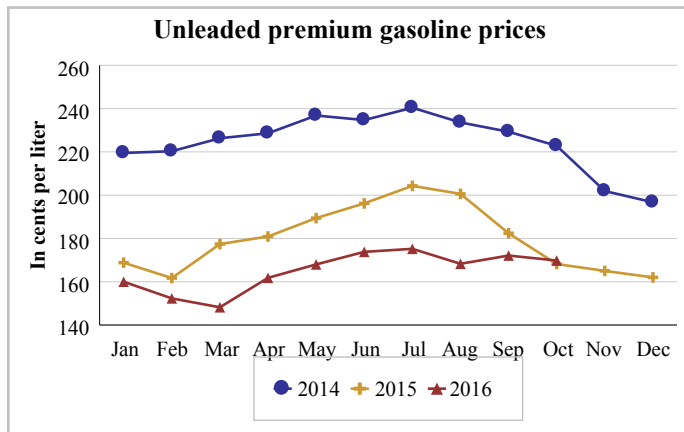


Chart 1.50

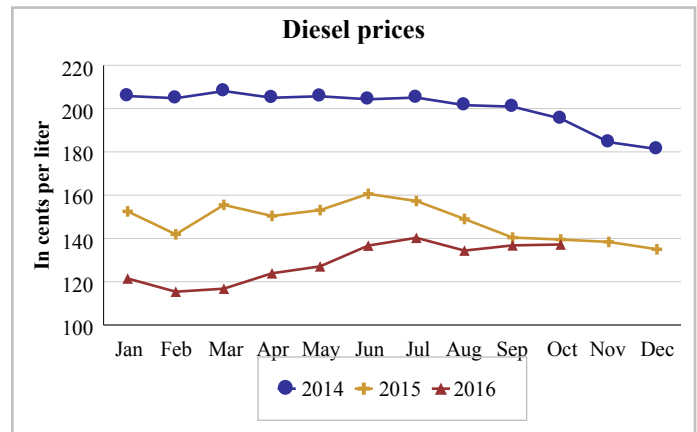


Chart 1.51

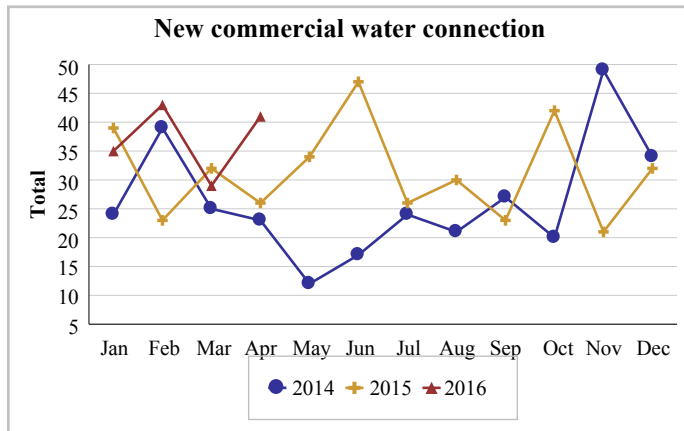
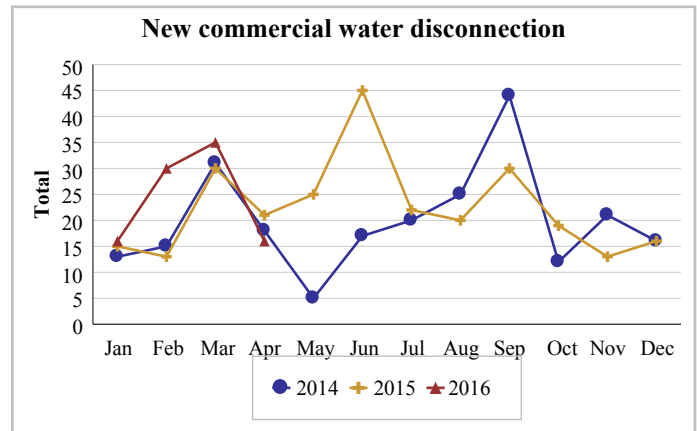


Chart 1.52



2. Monetary sector

Chart 2.1

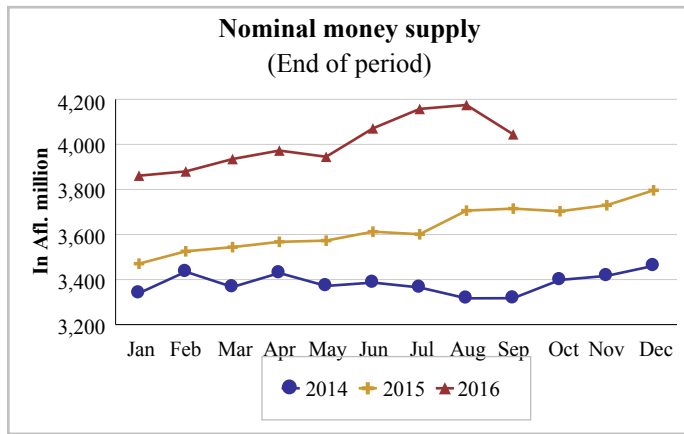


Chart 2.2

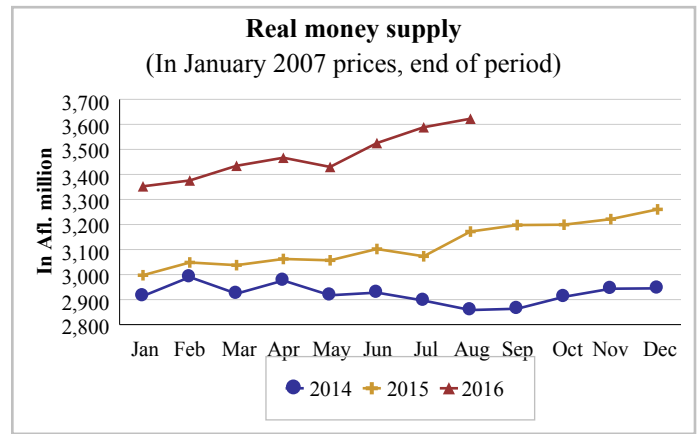


Chart 2.3

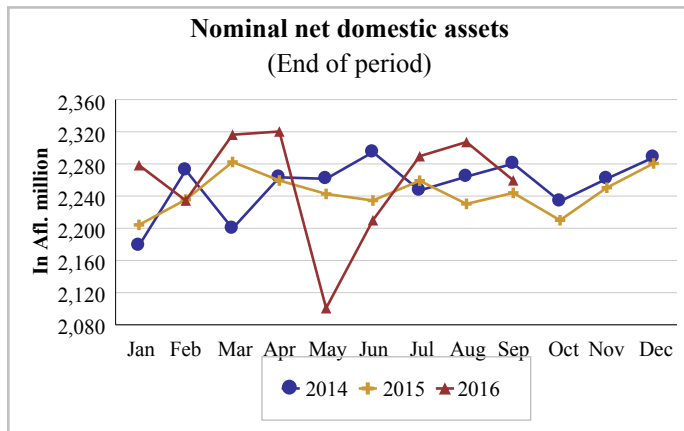


Chart 2.4

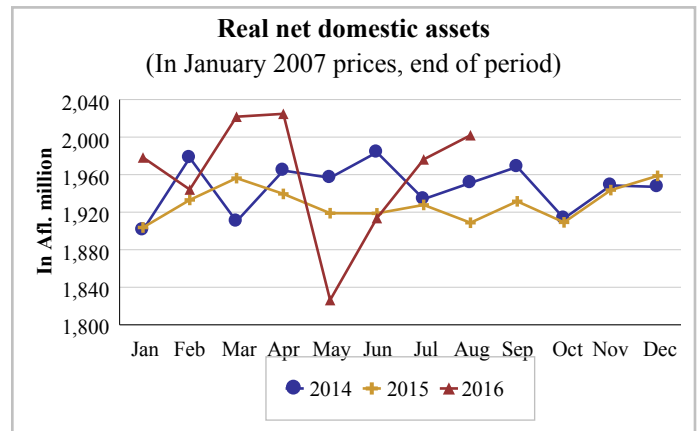


Chart 2.5

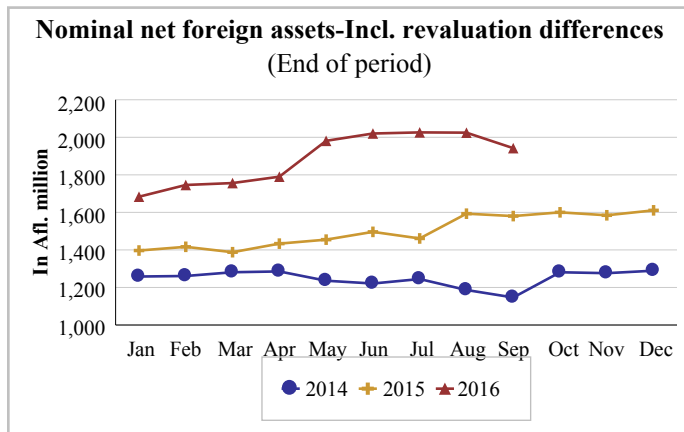


Chart 2.6

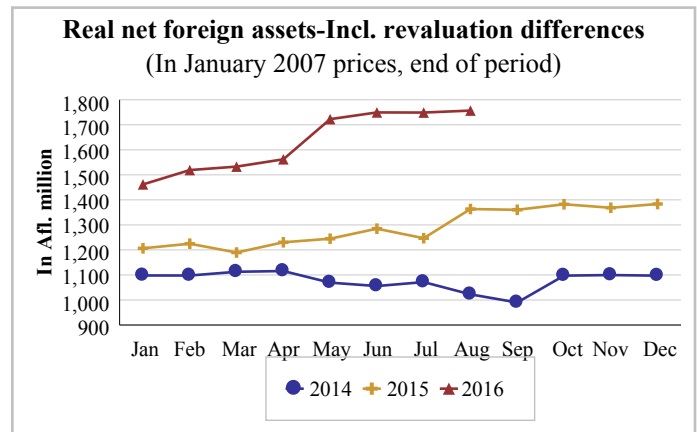


Chart 2.7

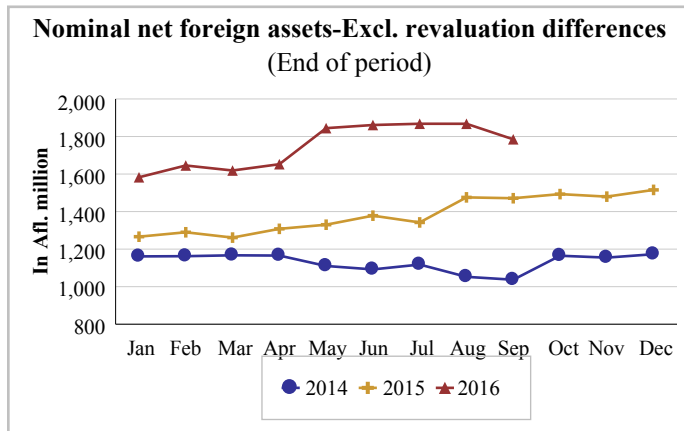


Chart 2.8

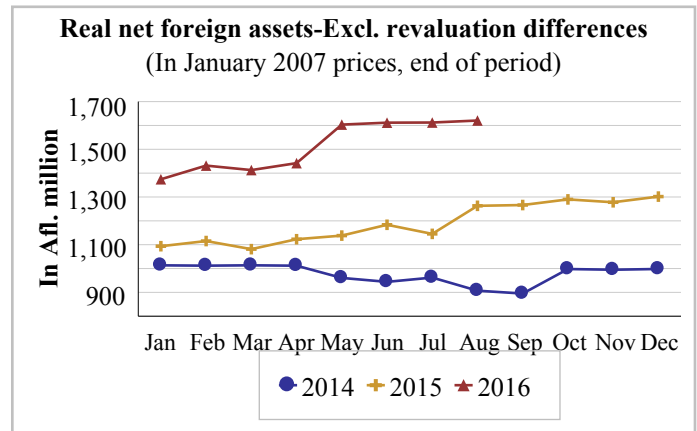


Chart 2.9

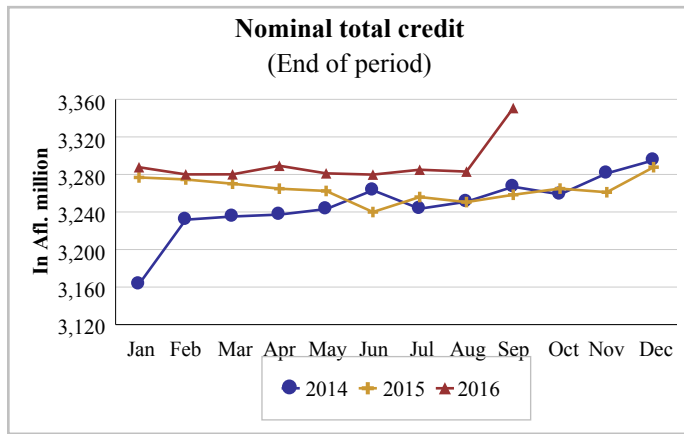


Chart 2.10

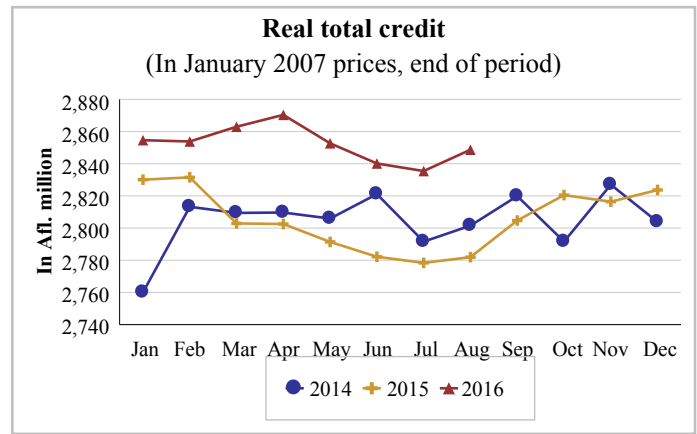


Chart 2.11

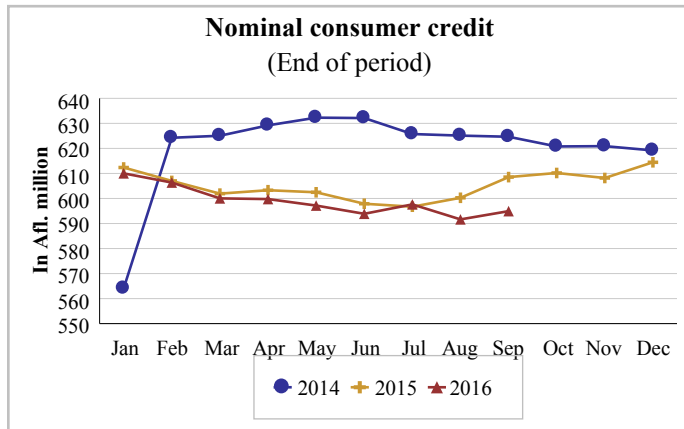


Chart 2.12

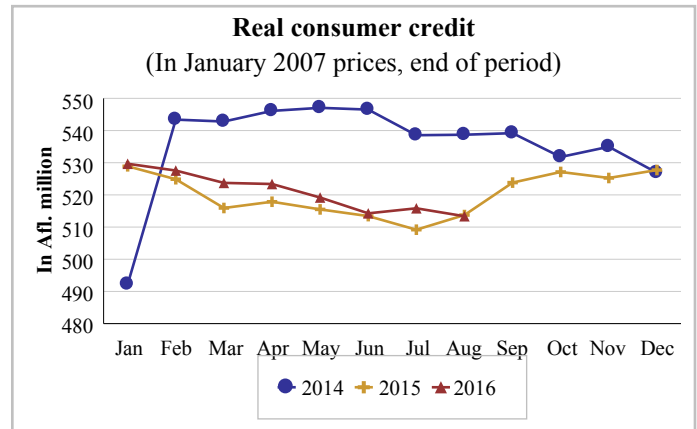


Chart 2.13

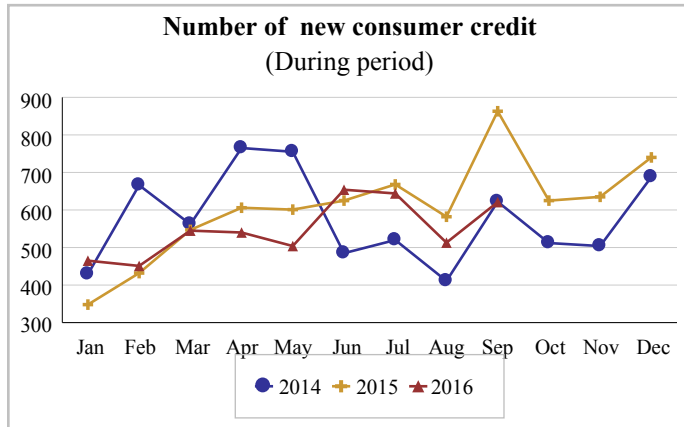


Chart 2.14

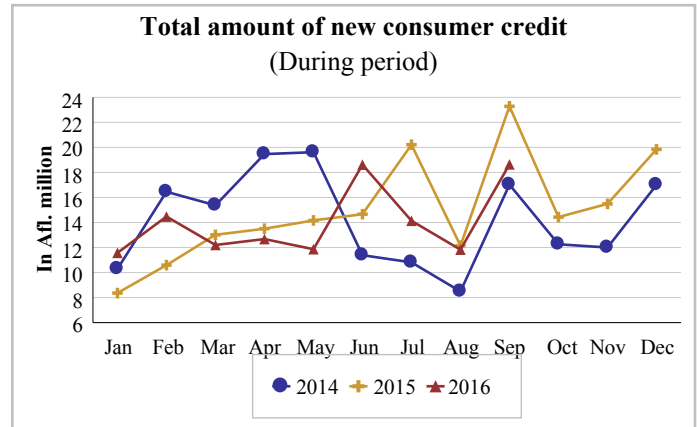


Chart 2.15

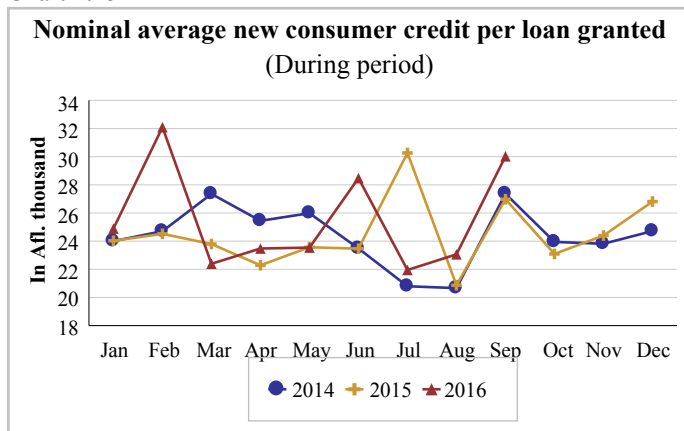


Chart 2.16

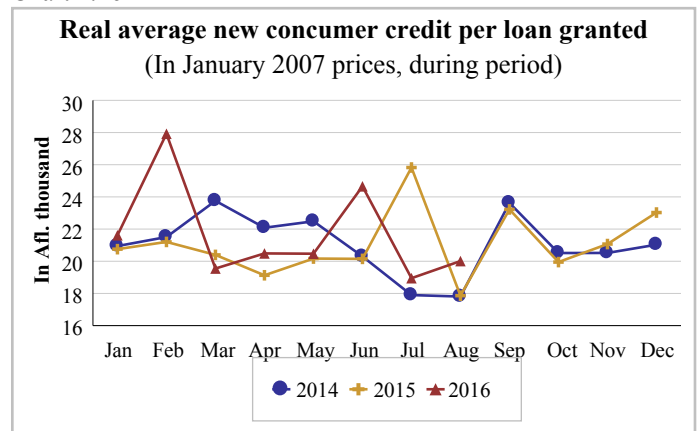


Chart 2.17

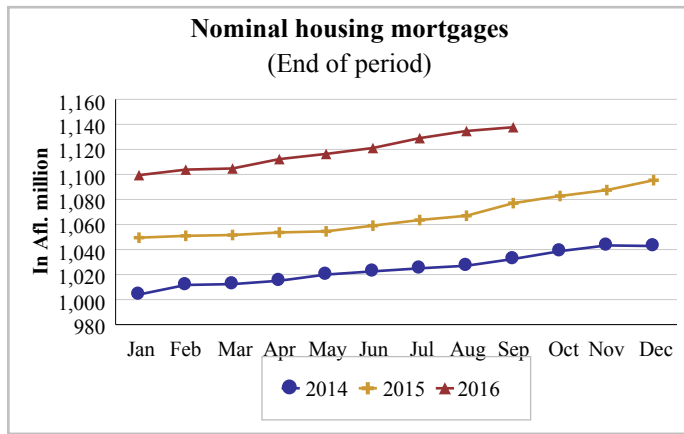


Chart 2.18

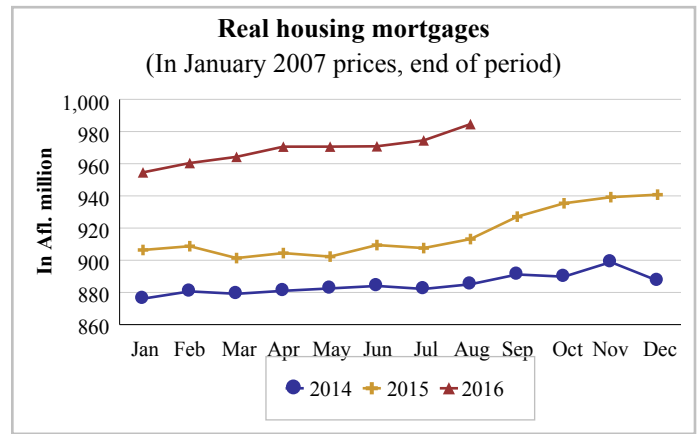


Chart 2.19

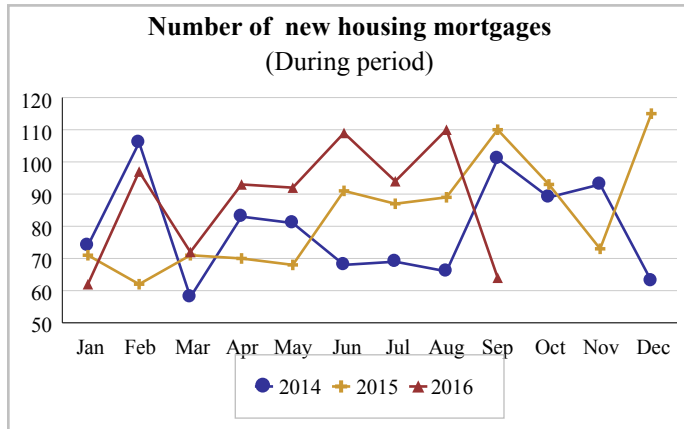


Chart 2.20

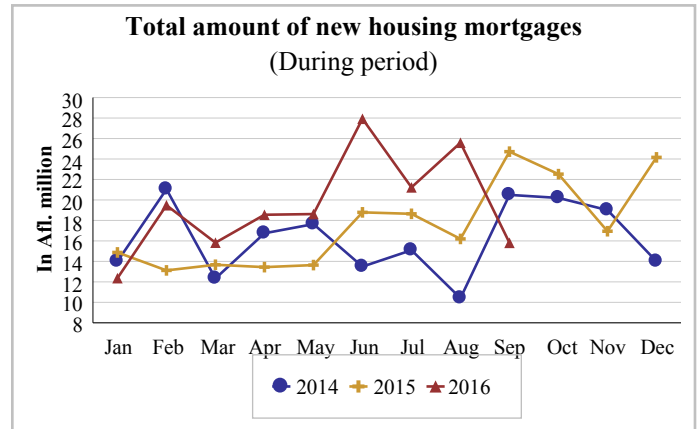


Chart 2.21

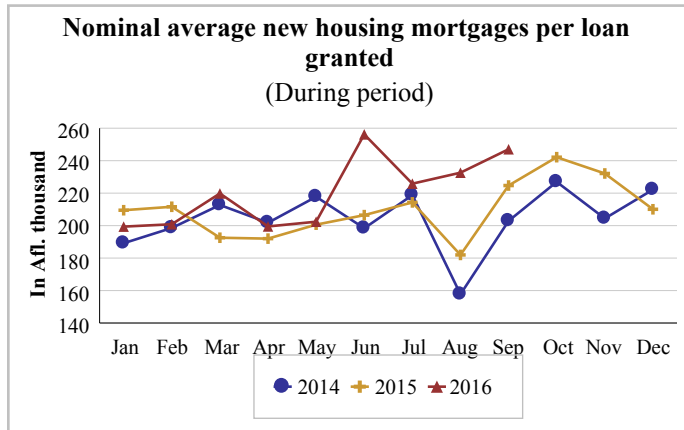


Chart 2.22

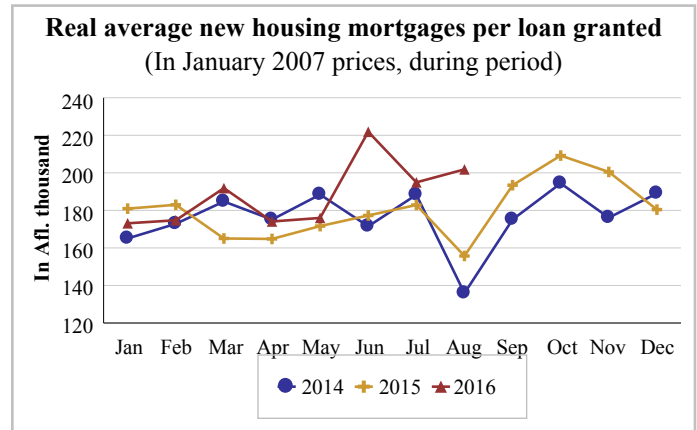


Chart 2.23

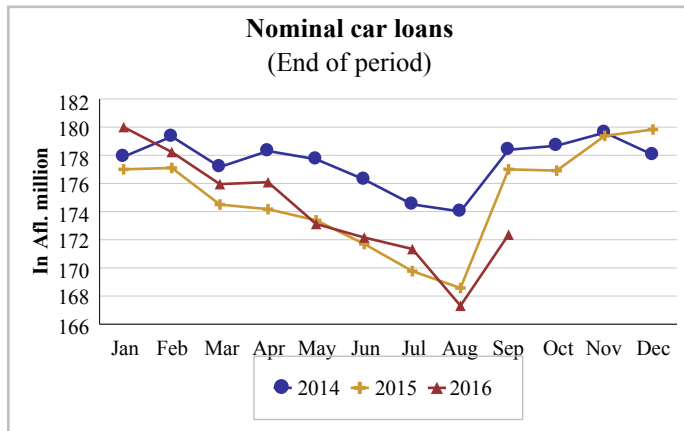


Chart 2.24

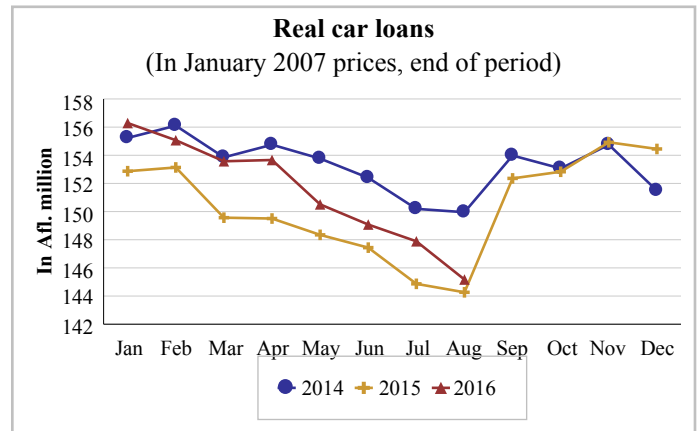


Chart 2.25

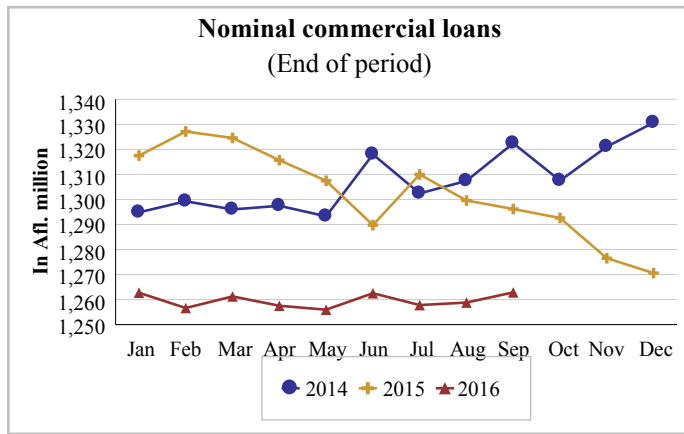


Chart 2.26

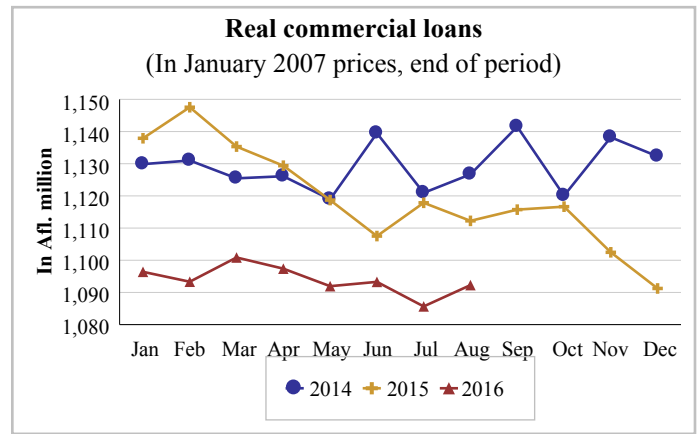


Chart 2.27

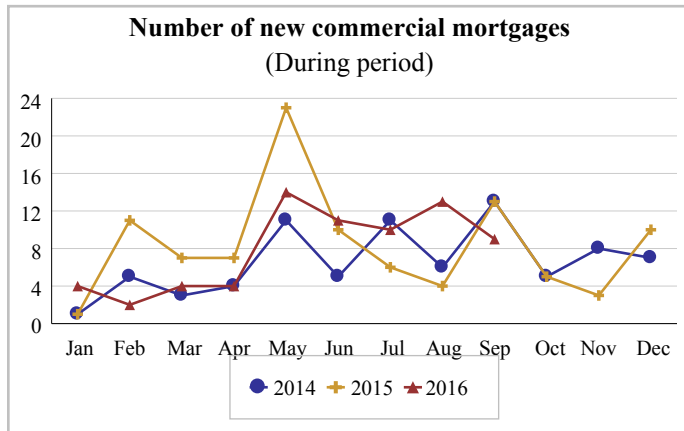


Chart 2.28

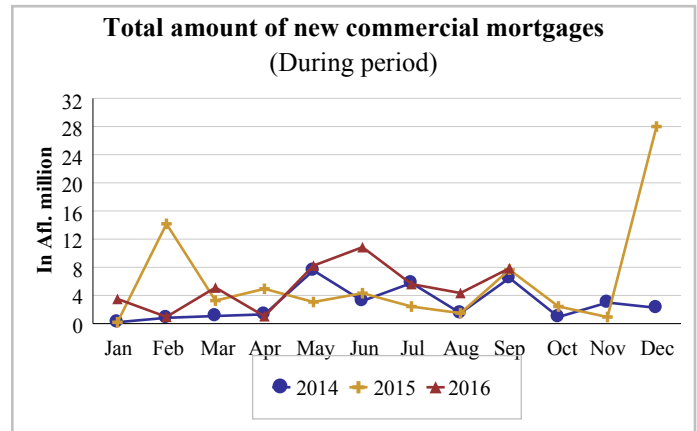


Chart 2.29

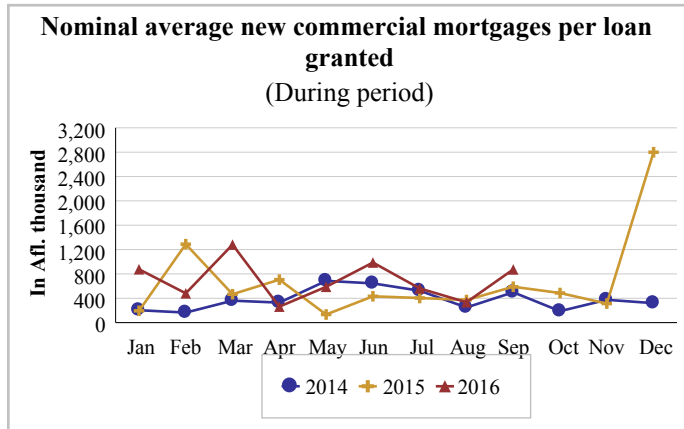


Chart 2.30

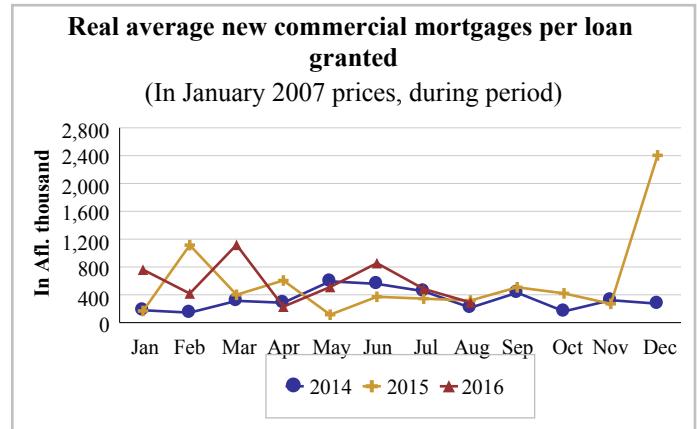


Chart 2.31

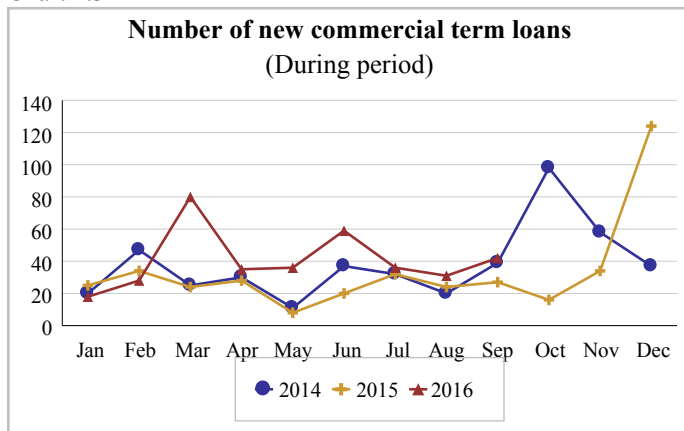


Chart 2.32

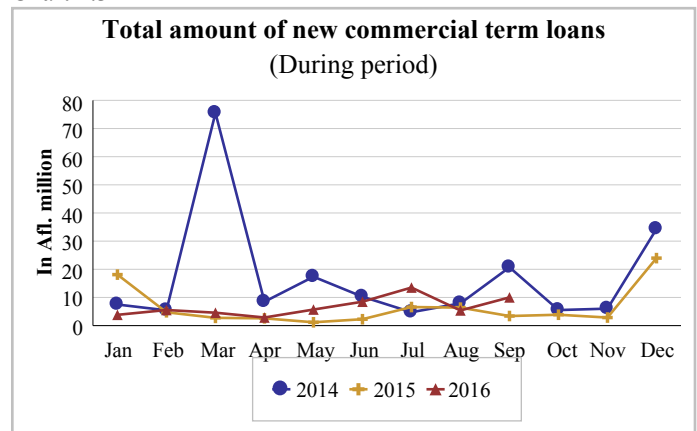


Chart 2.33

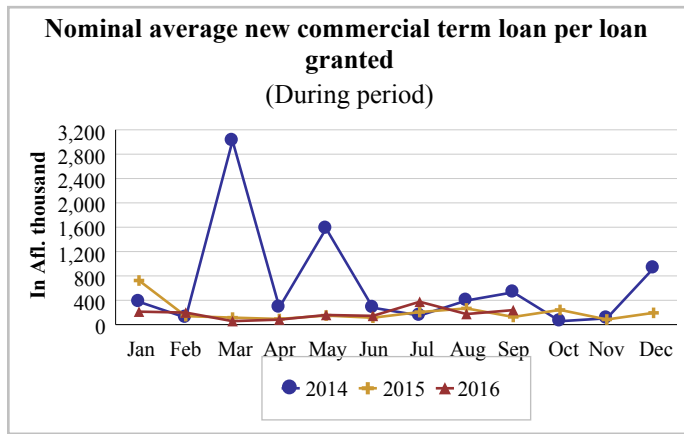


Chart 2.34

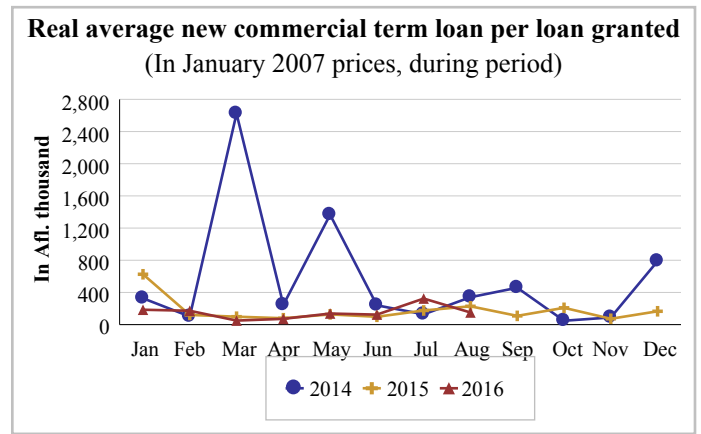


Chart 2.35

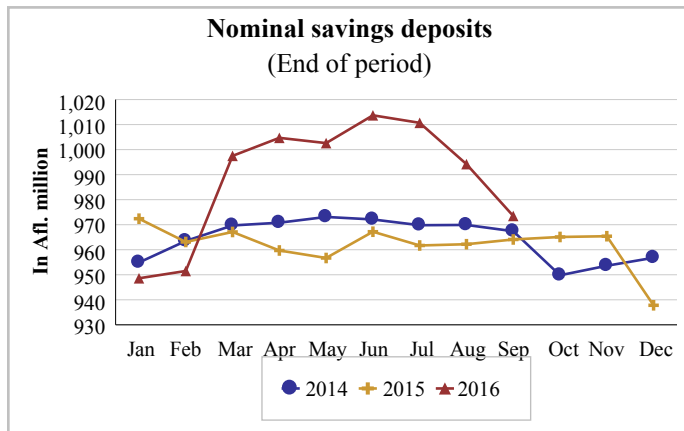


Chart 2.36

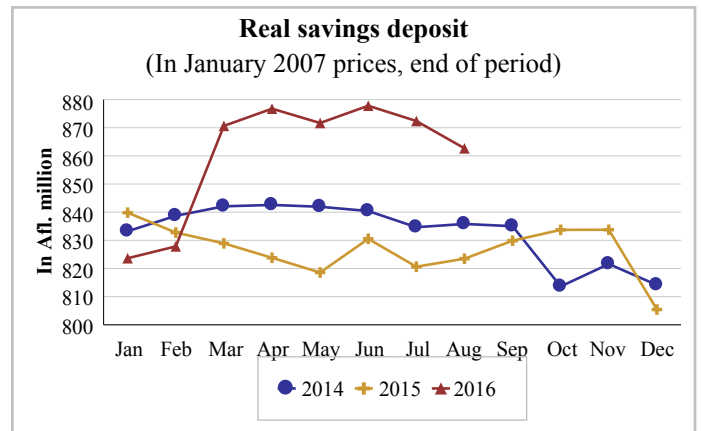


Chart 2.37

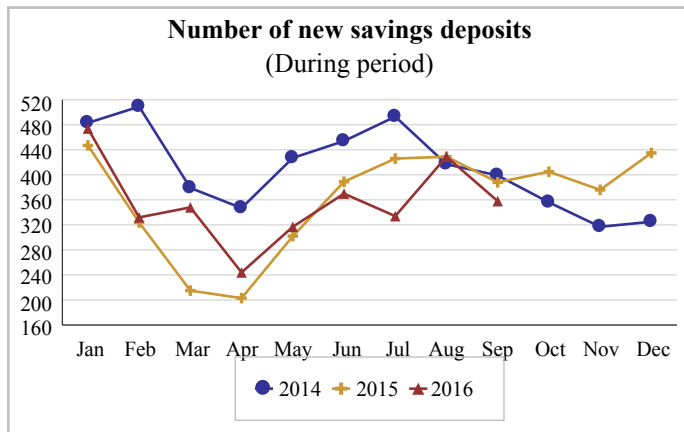


Chart 2.38

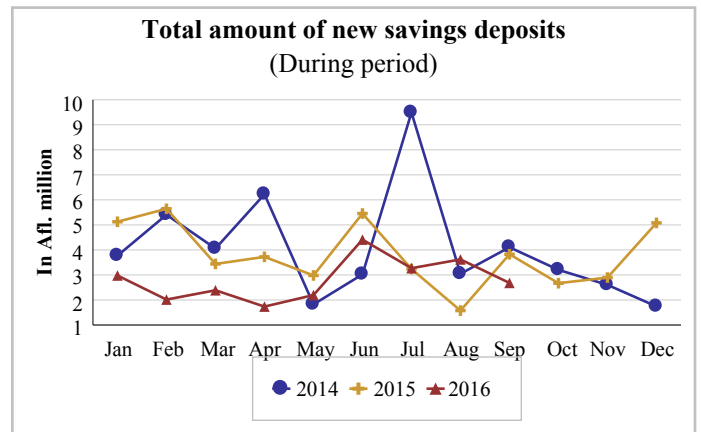


Chart 2.39

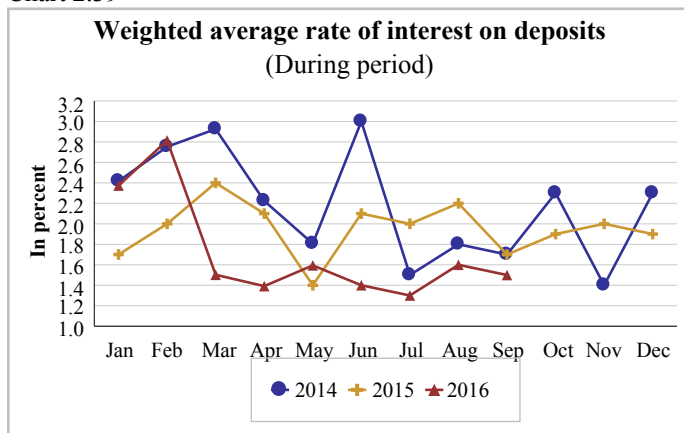


Chart 2.40

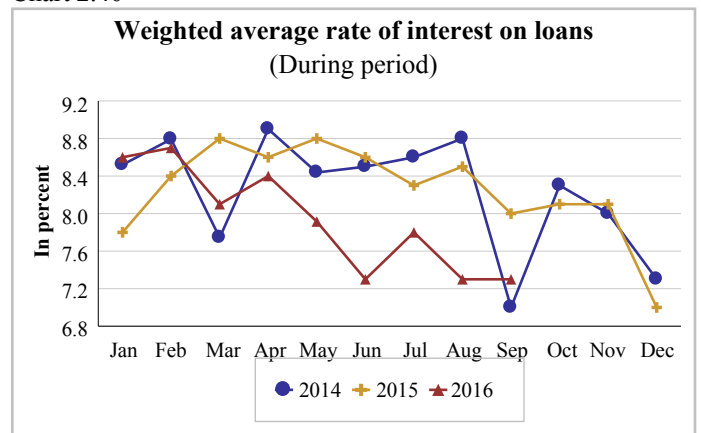


Chart 2.41

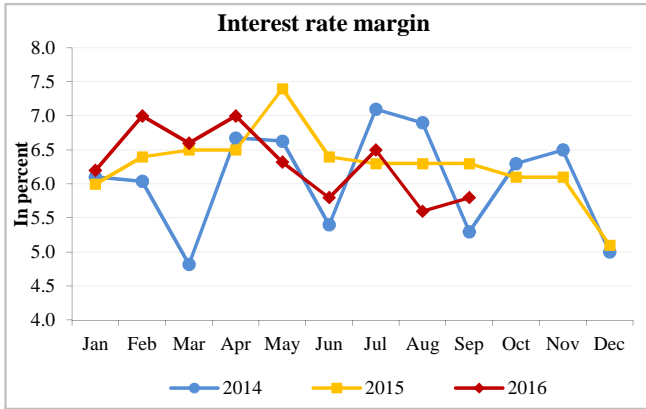


Chart 2.42

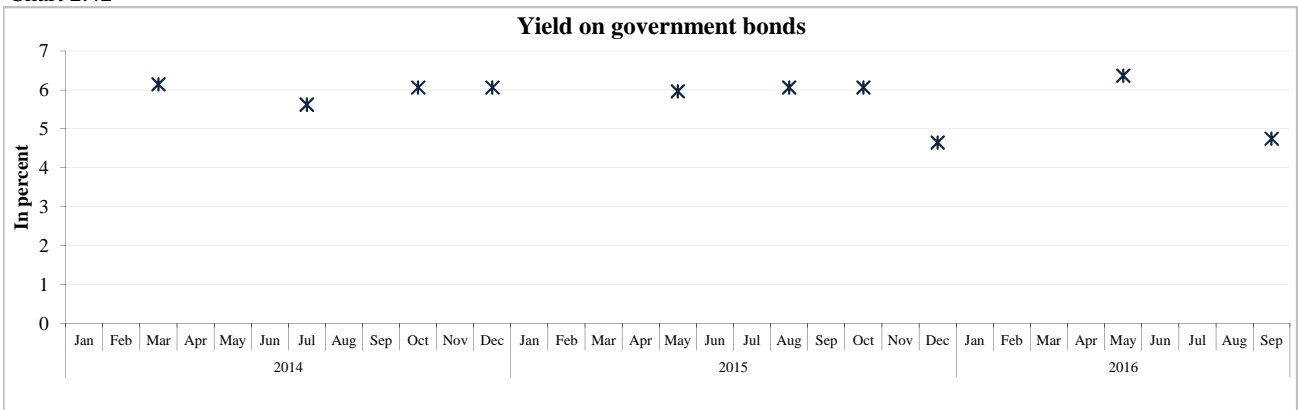


Chart 2.43

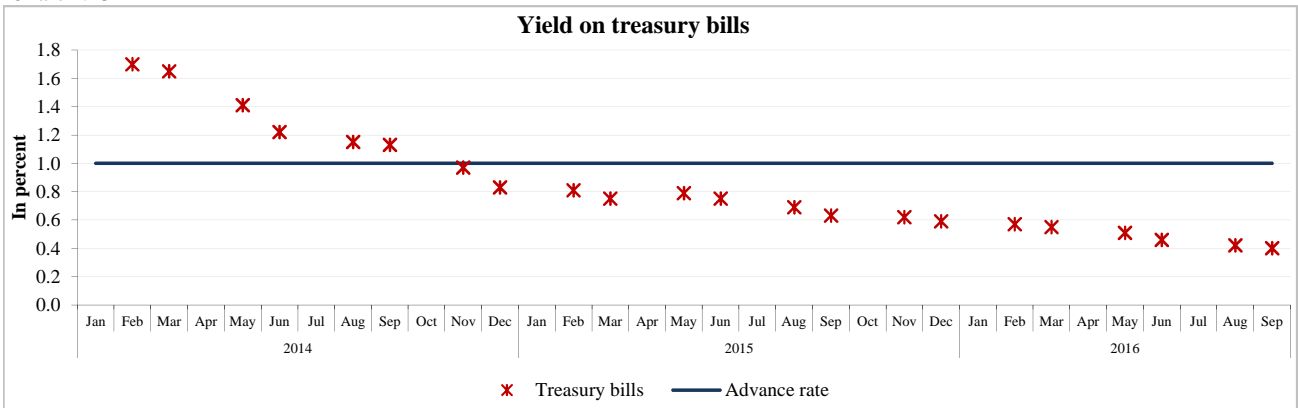


Chart 2.44

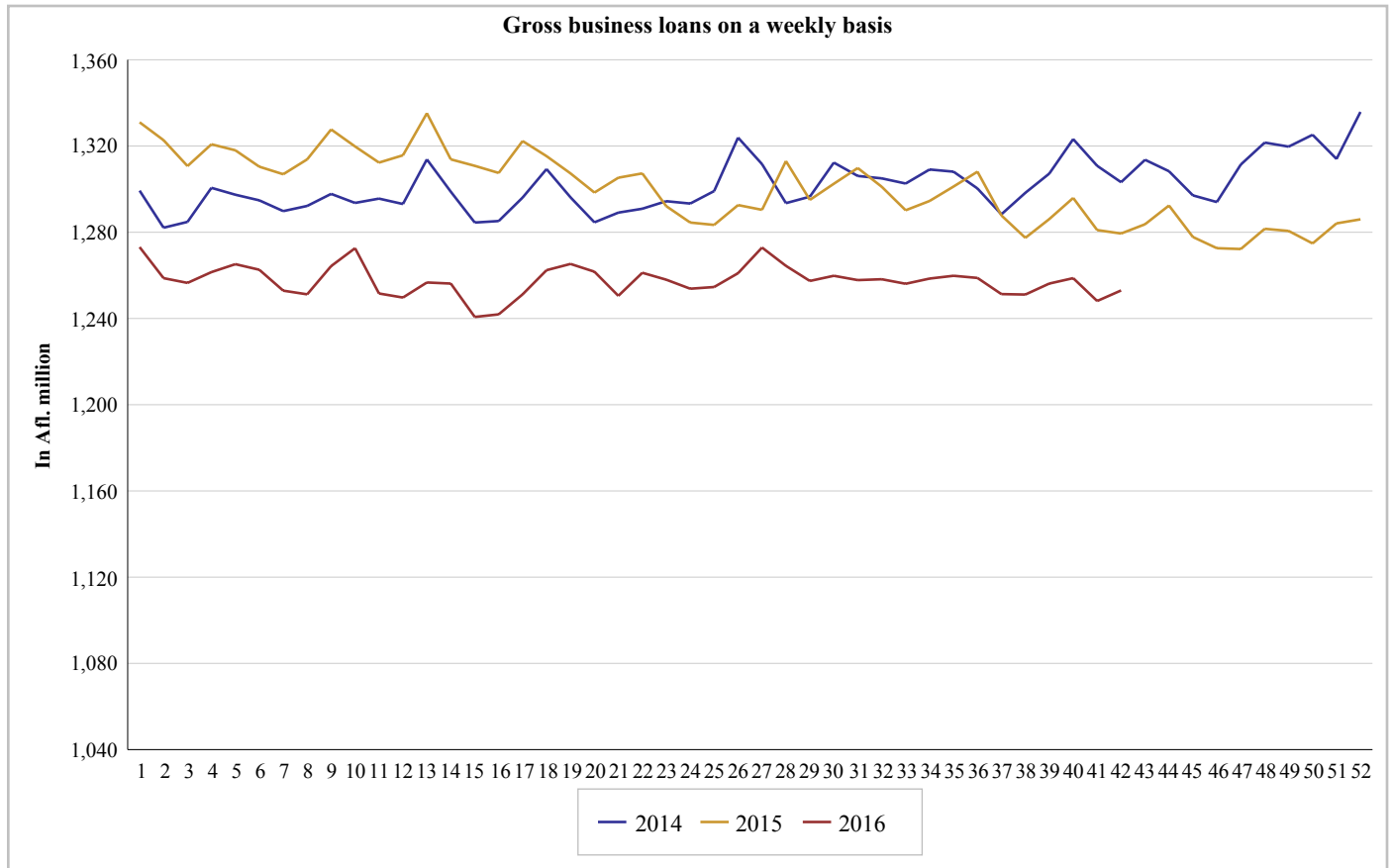
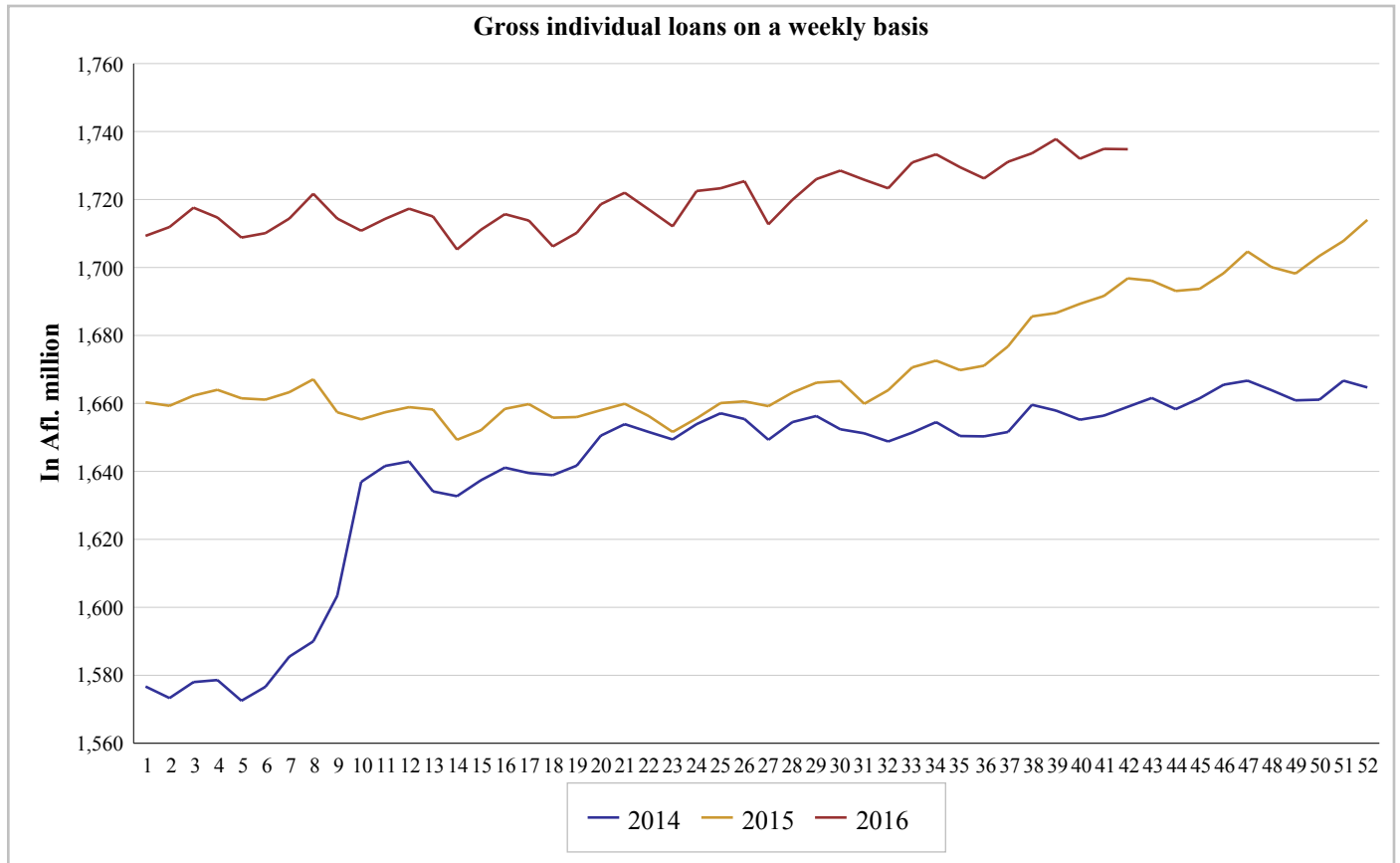


Chart 2.45



3. Public finance

Chart 3.1

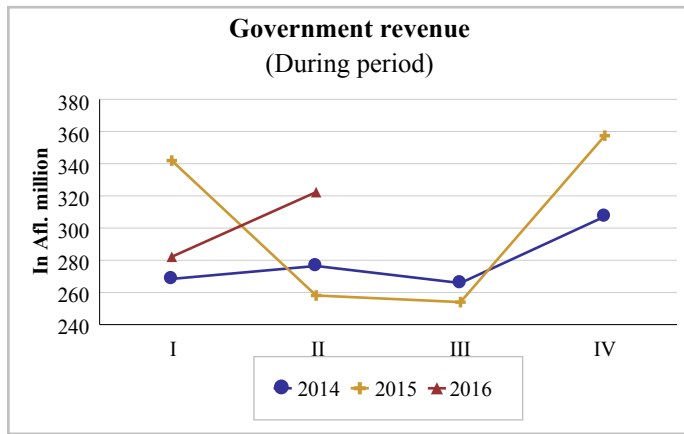


Chart 3.2

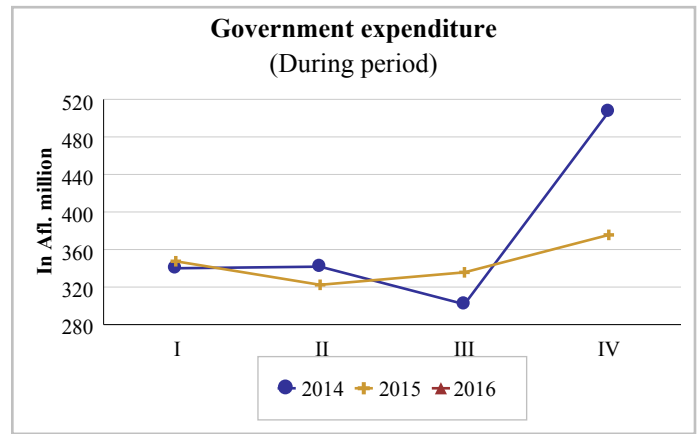


Chart 3.3

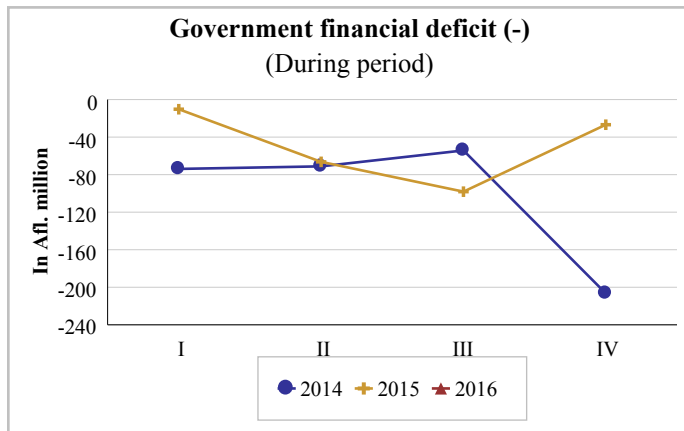


Chart 3.4

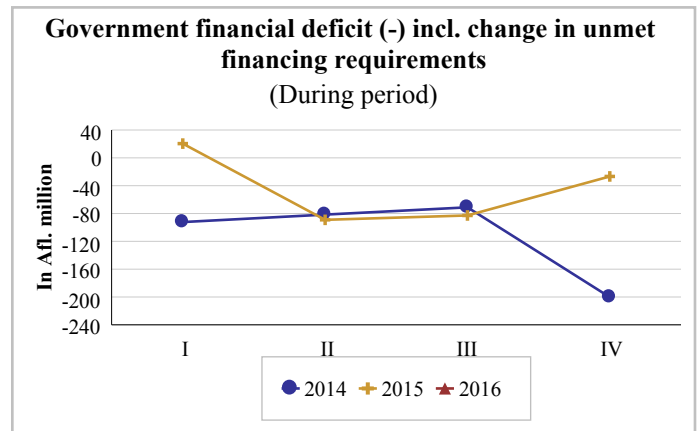


Chart 3.5

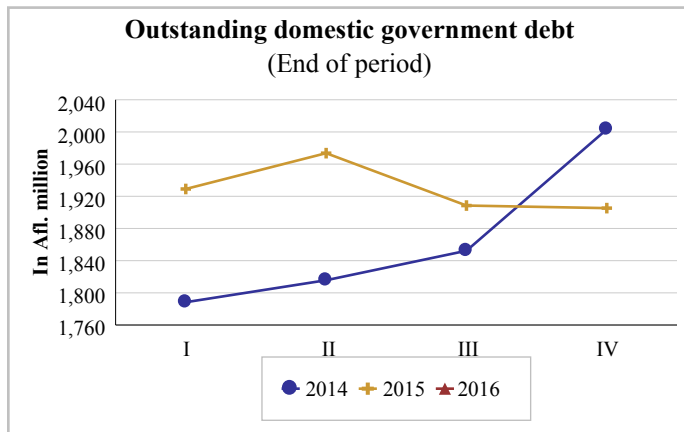


Chart 3.6

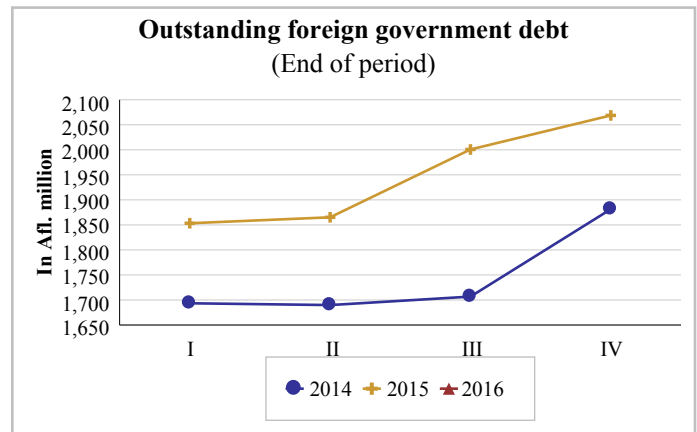


Chart 3.7

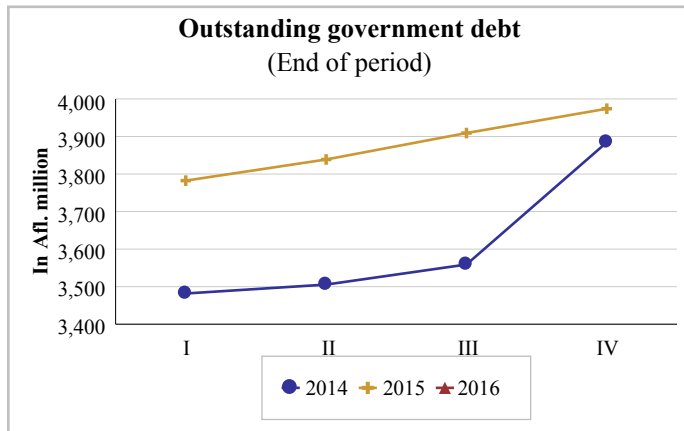


Chart 3.8

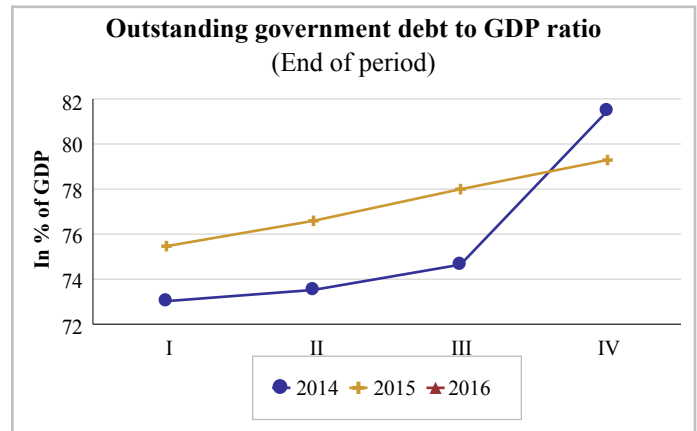


Chart 3.9

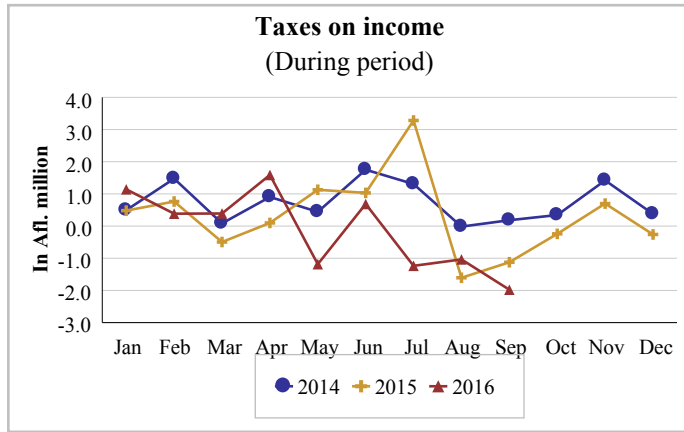


Chart 3.10

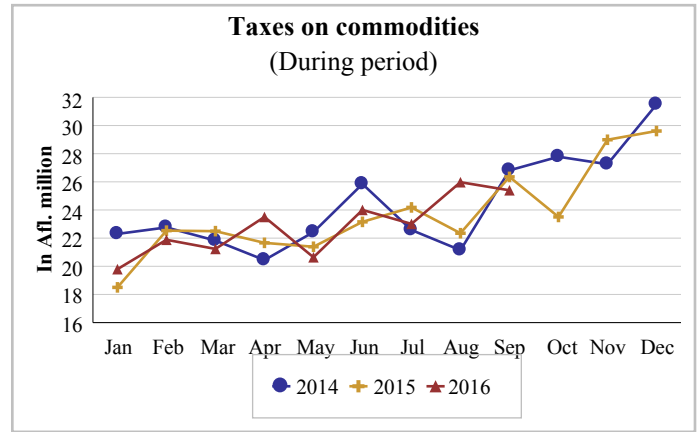


Chart 3.11

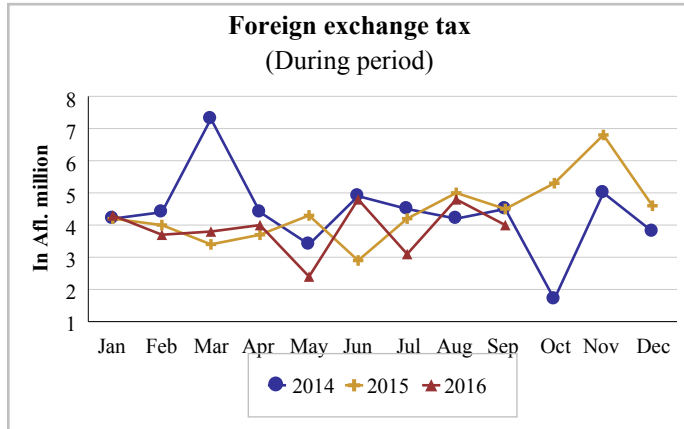


Chart 3.12

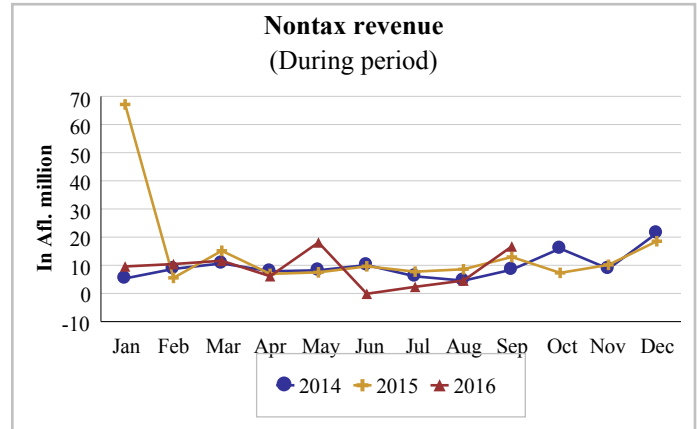


Chart 3.13

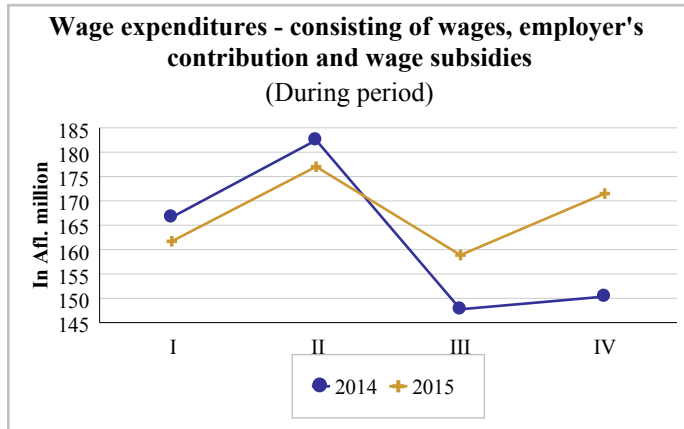


Chart 3.14

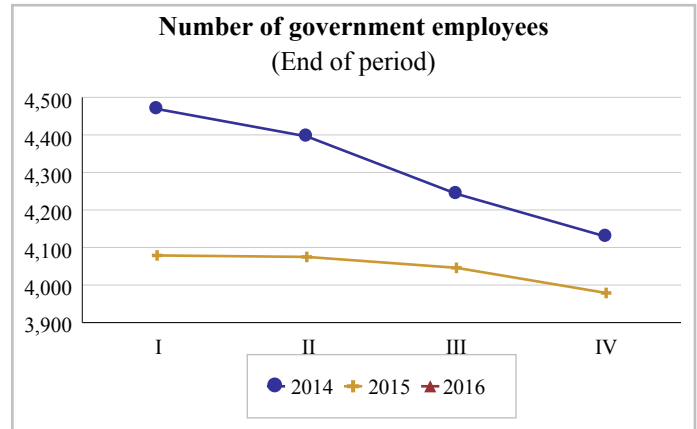


Chart 3.15

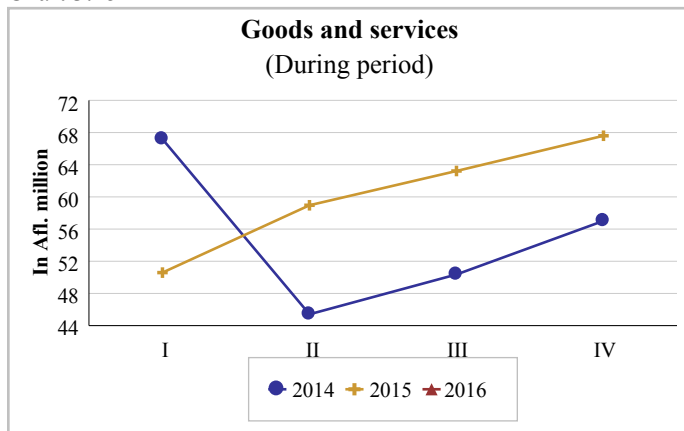


Chart 3.16

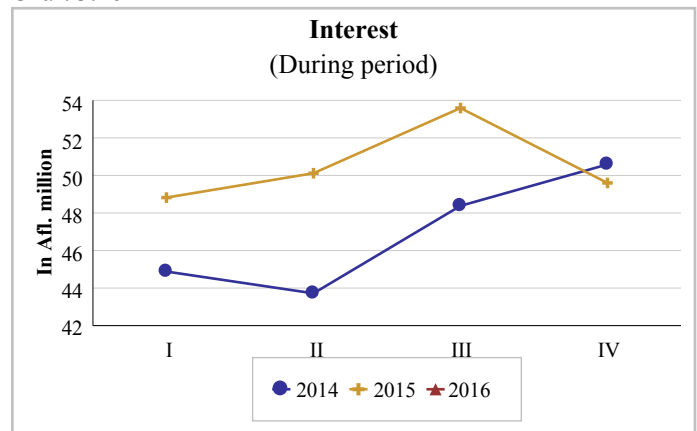


Chart 3.17

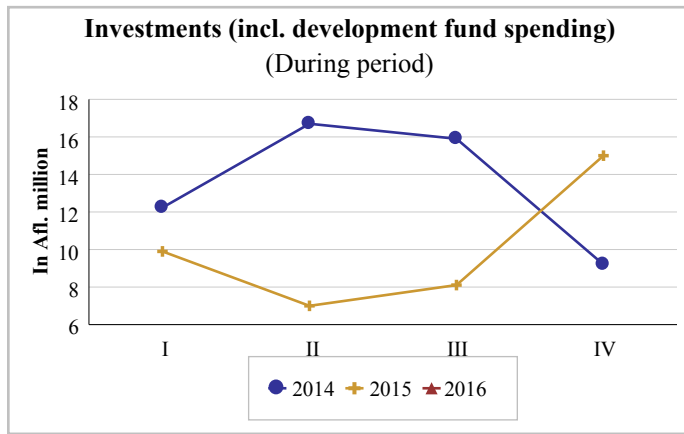


Chart 3.18

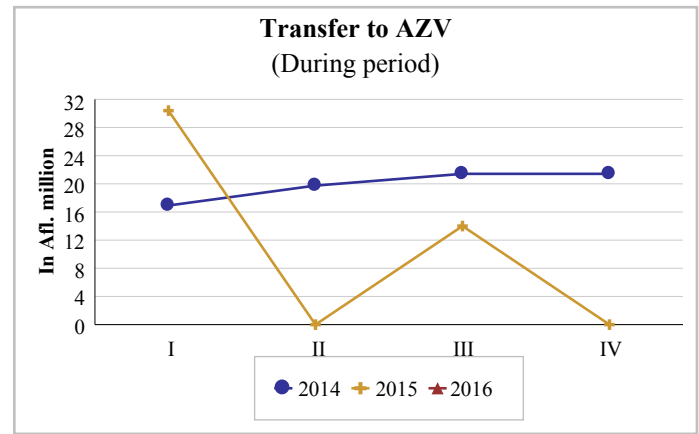
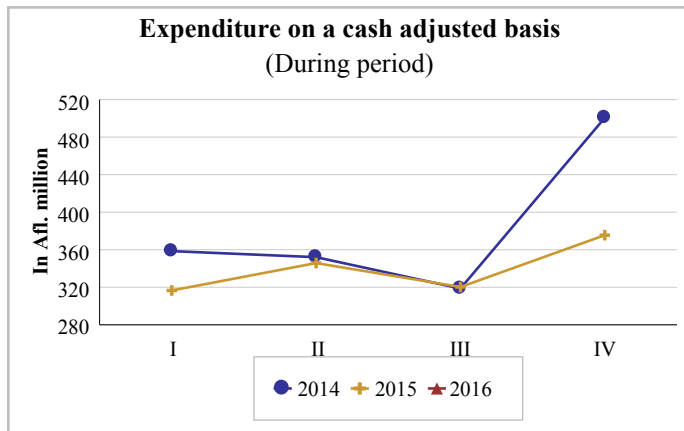


Chart 3.19



4. External sector

Chart 4.1

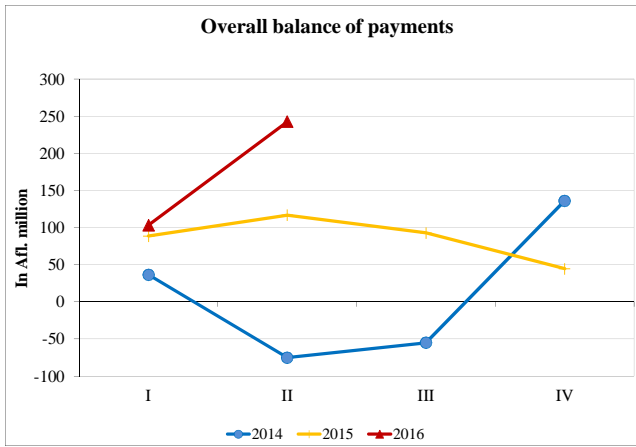


Chart 4.2

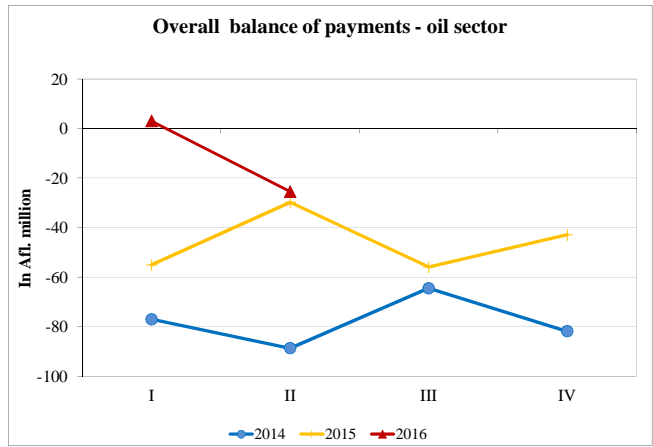


Chart 4.3

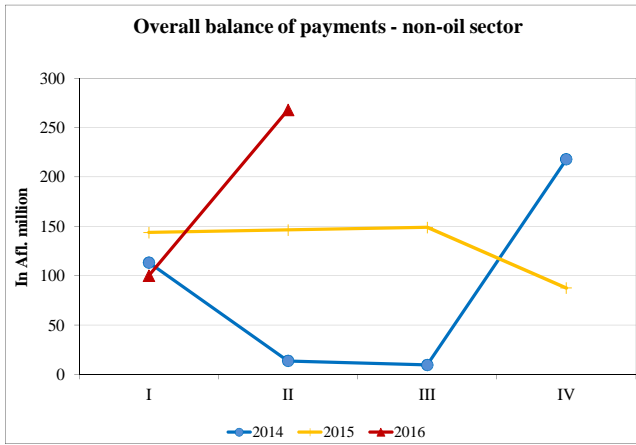


Chart 4.4

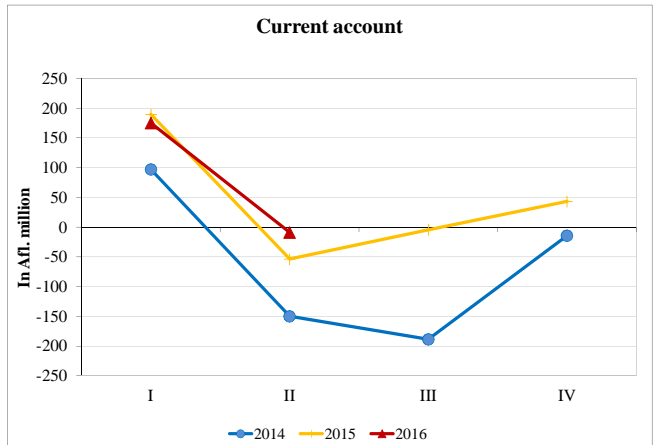


Chart 4.5

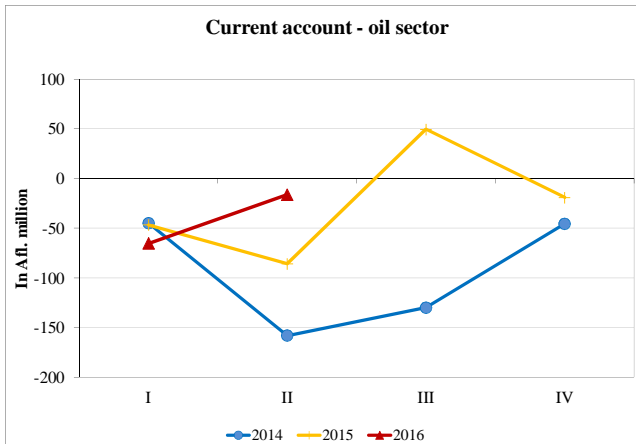


Chart 4.6

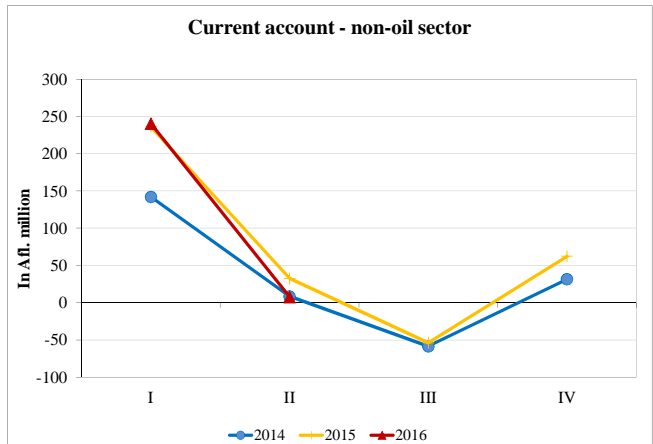


Chart 4.7

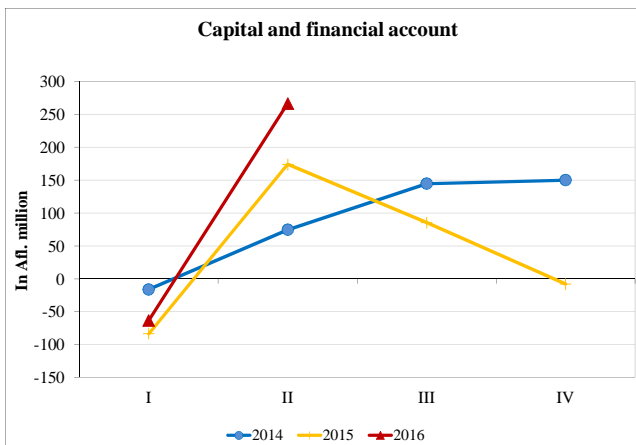


Chart 4.8

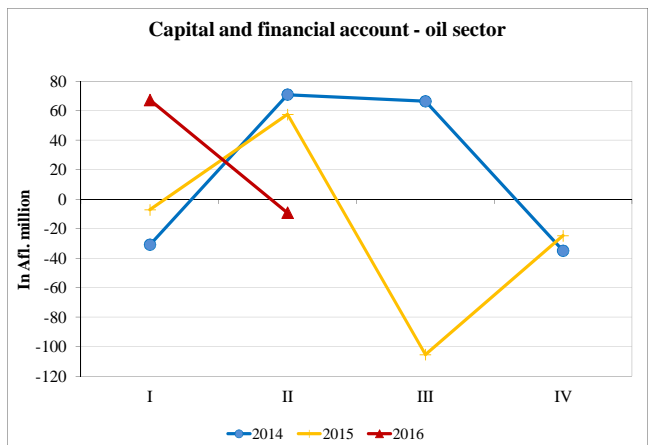


Chart 4.9

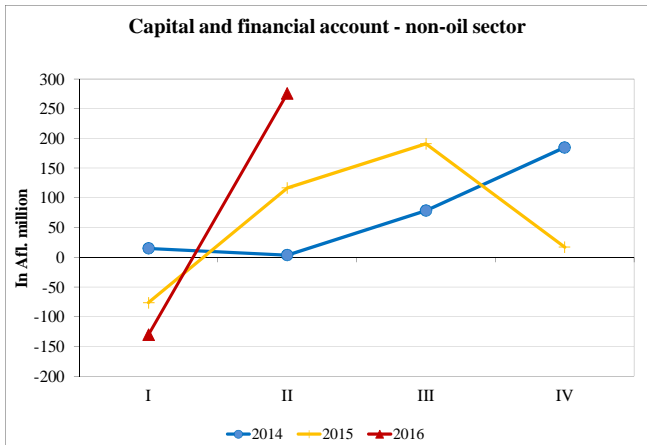


Chart 4.10



Chart 4.11



Chart 4.12

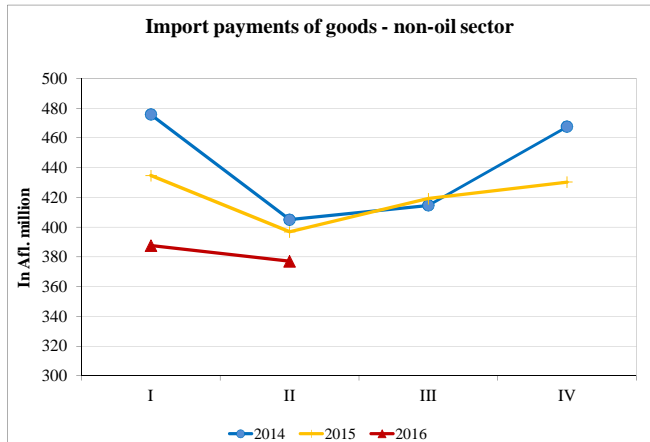


Chart 4.13

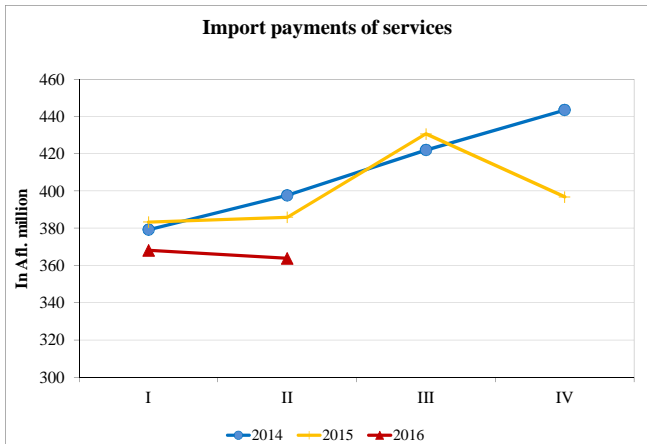


Chart 4.14

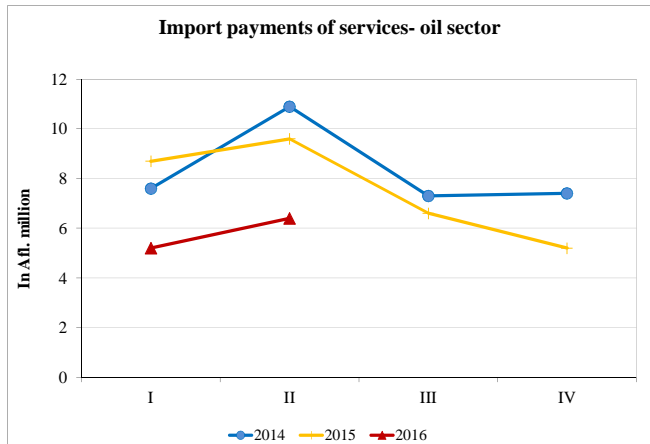


Chart 4.15

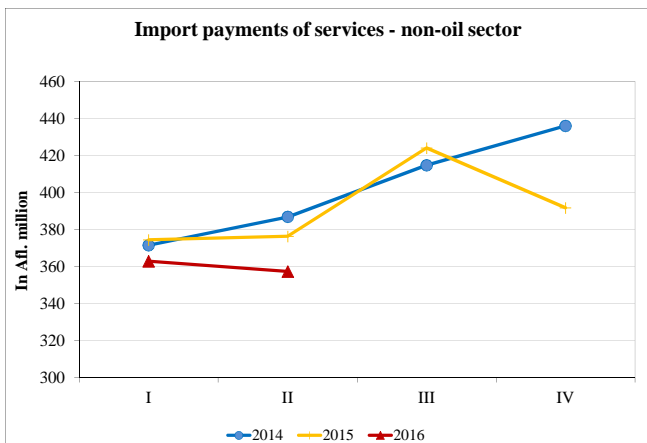


Chart 4.16



Chart 4.17

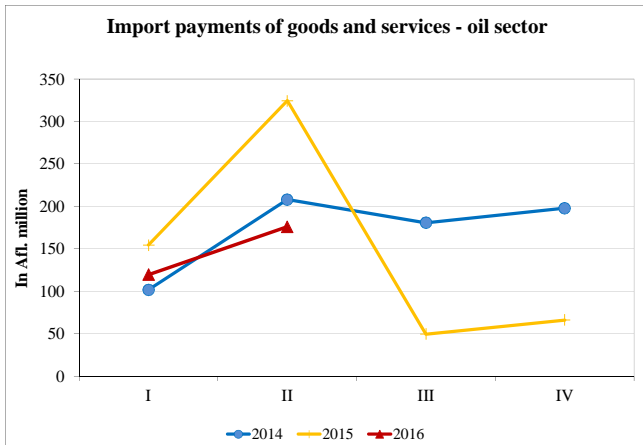


Chart 4.18

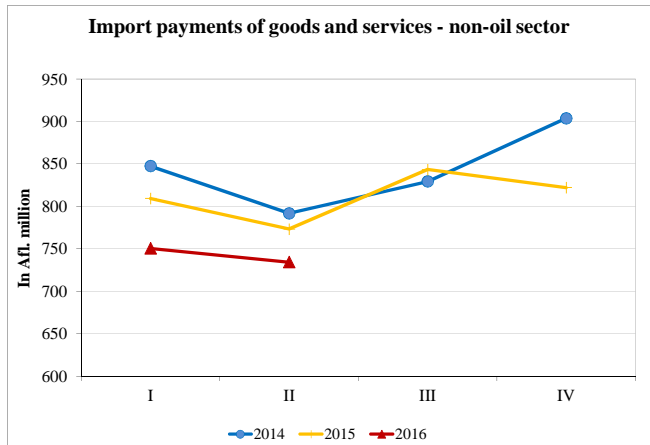


Chart 4.19

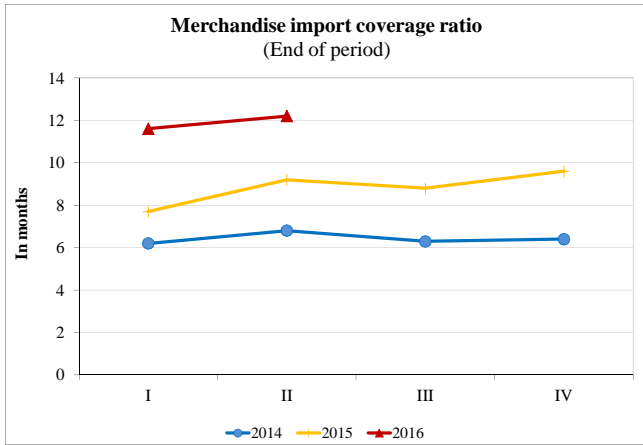


Chart 4.20

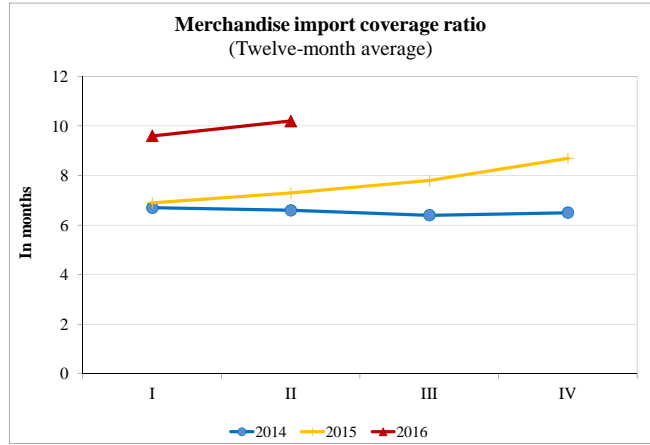


Chart 4.21

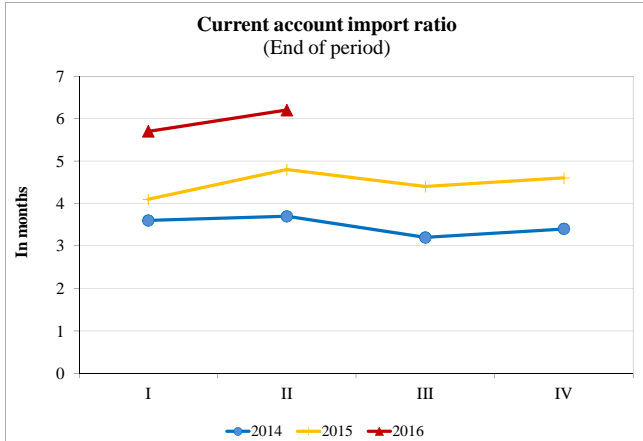
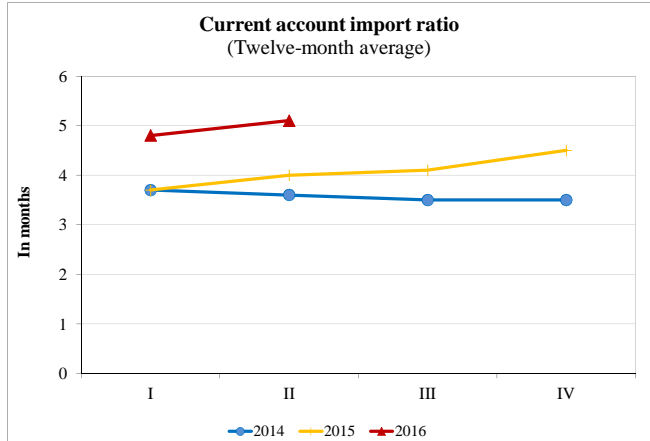


Chart 4.22



5. Macprudential indicators

Chart 5.1

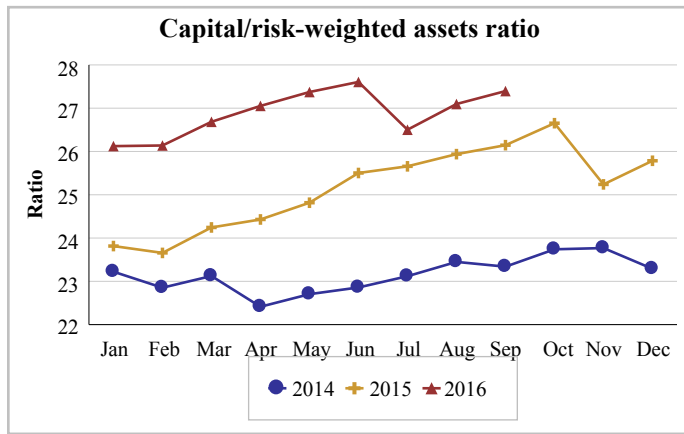


Chart 5.2

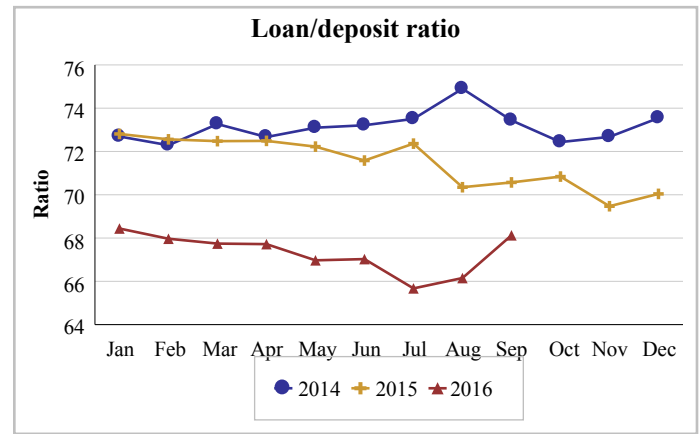


Chart 5.3

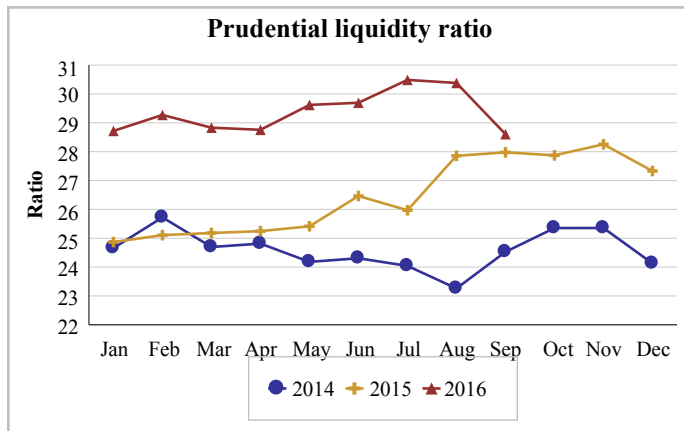


Chart 5.4

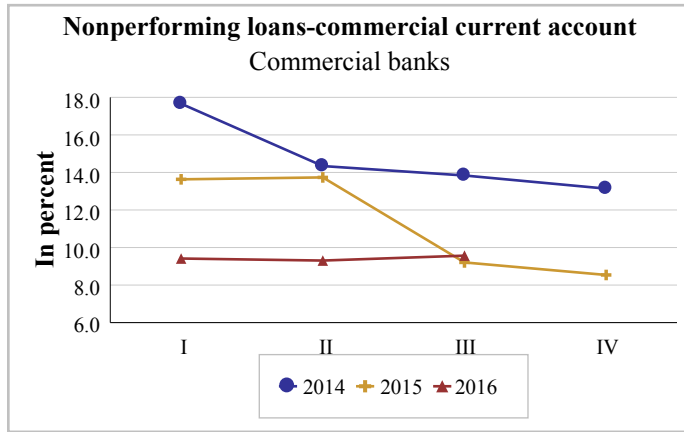


Chart 5.5

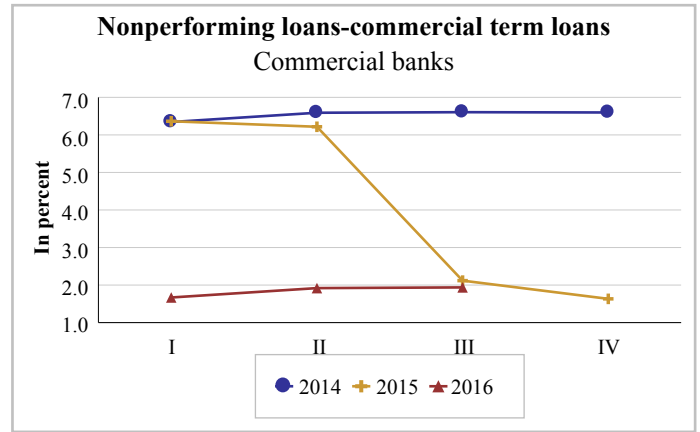


Chart 5.6

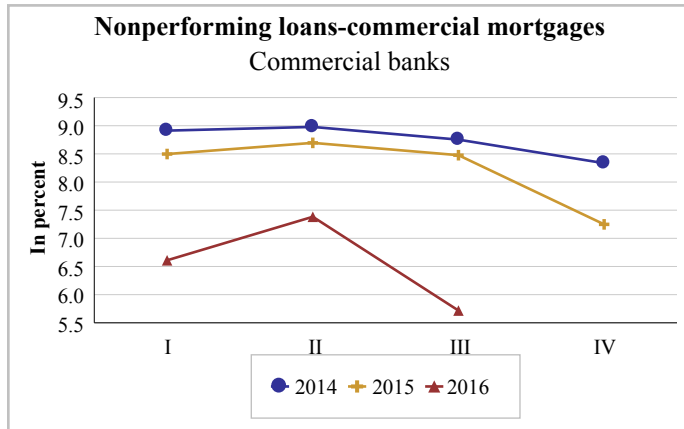


Chart 5.7

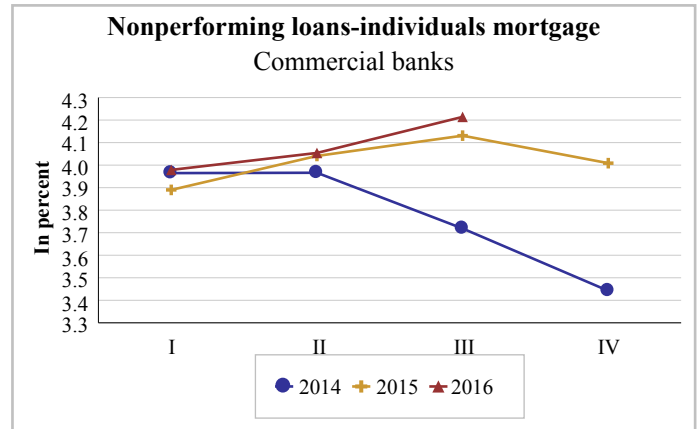


Chart 5.8

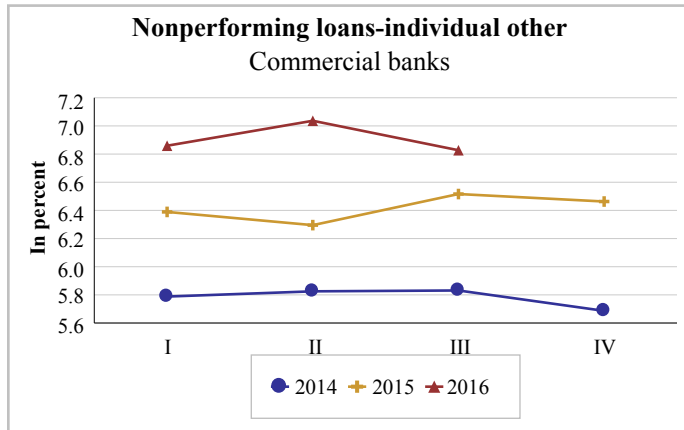


Chart 5.9

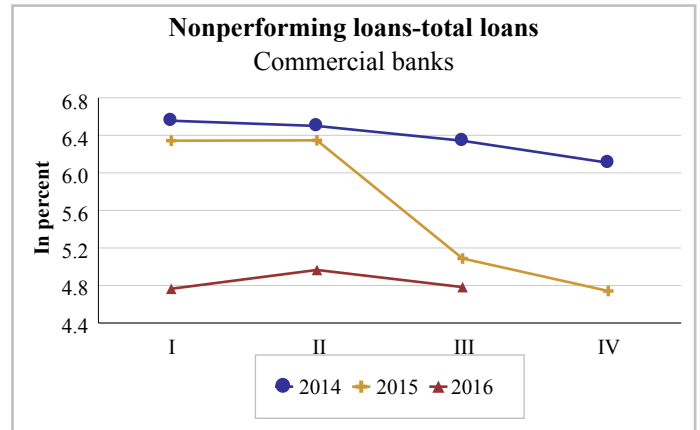


Chart 5.10

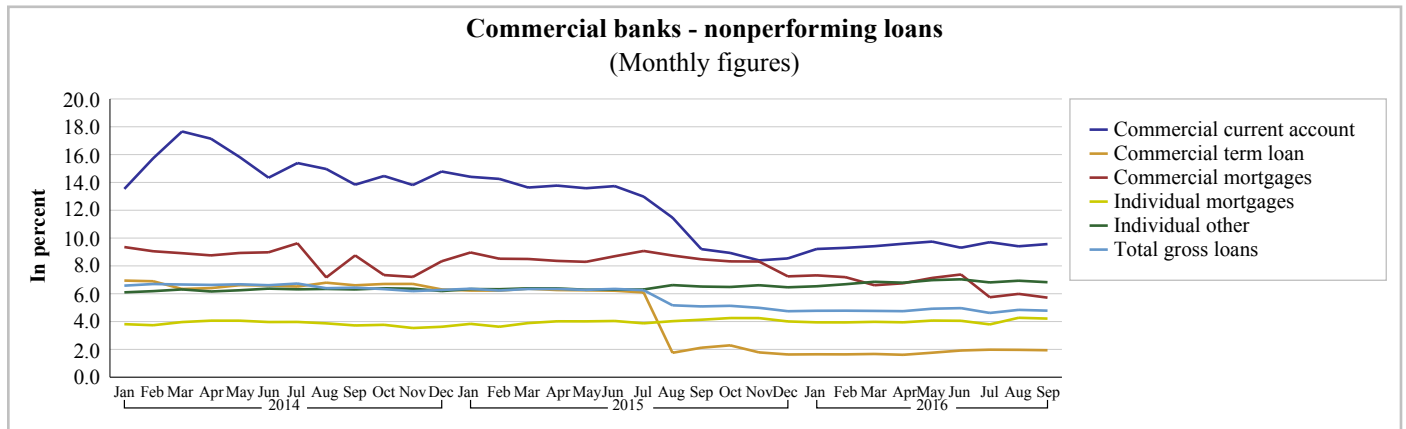
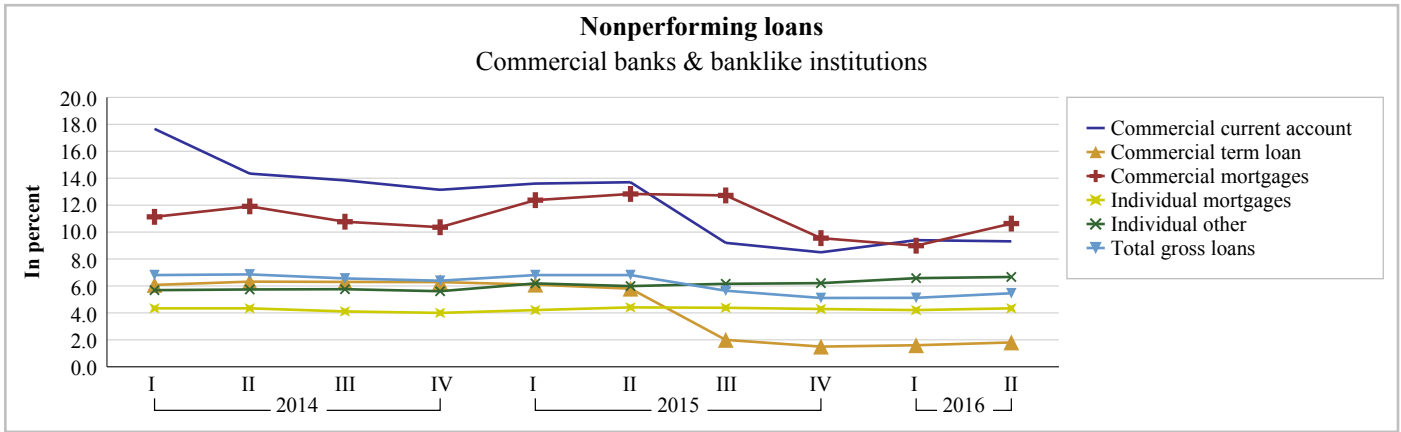


Chart 5.11



6. International environment

Chart 6.1

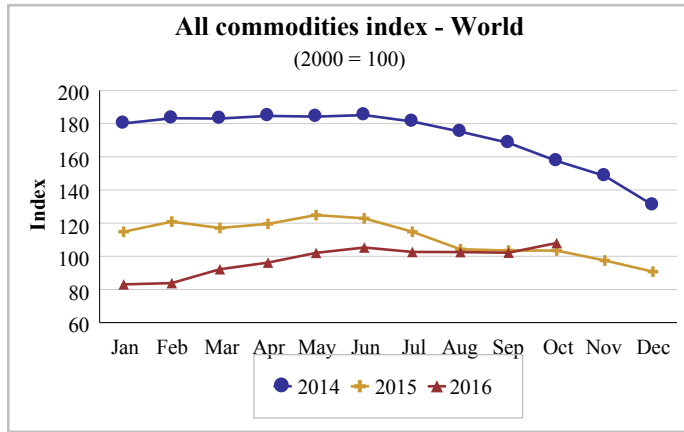


Chart 6.2

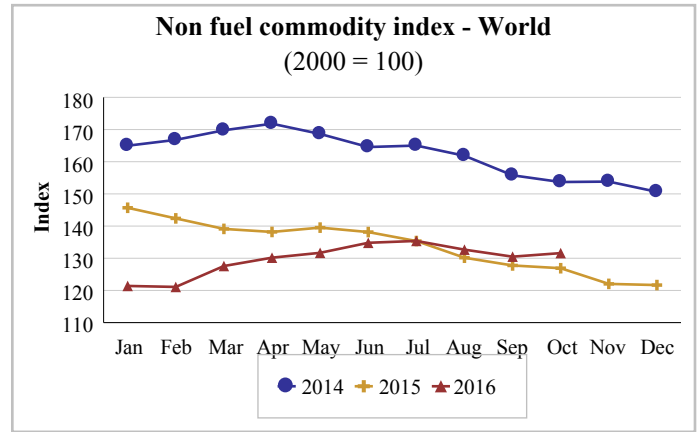


Chart 6.3

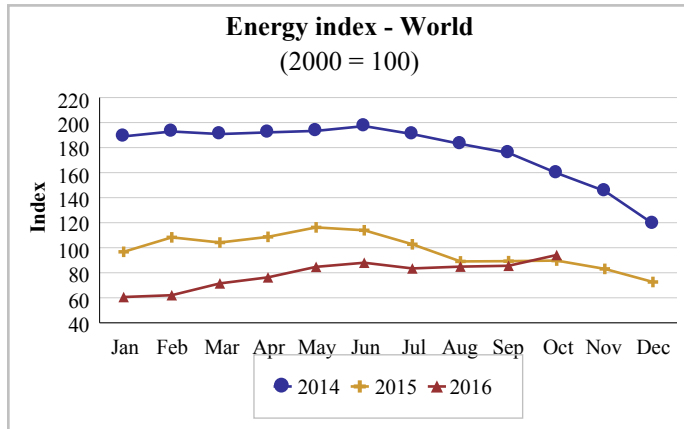


Chart 6.4

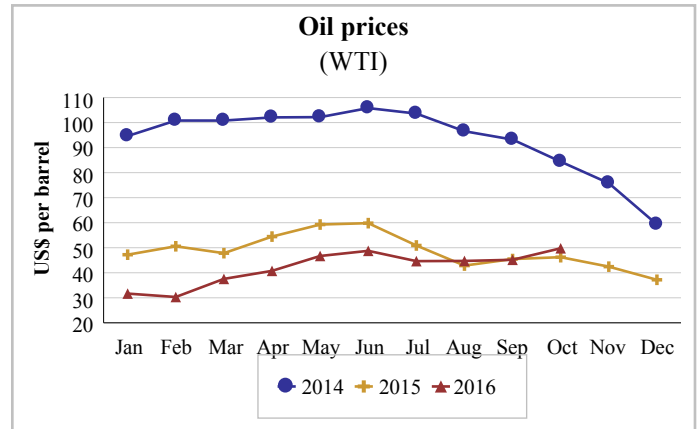


Chart 6.5

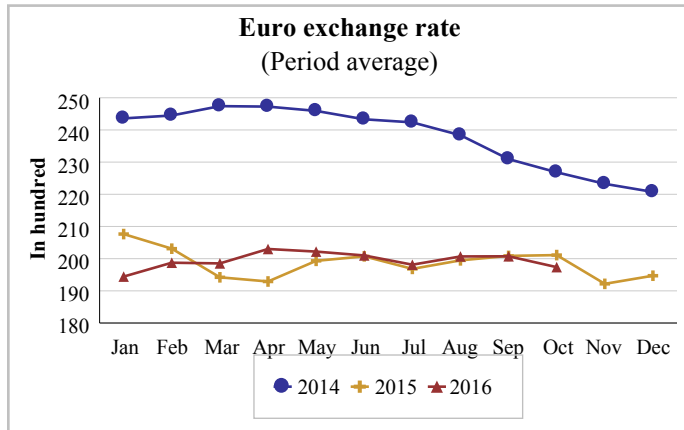


Chart 6.6

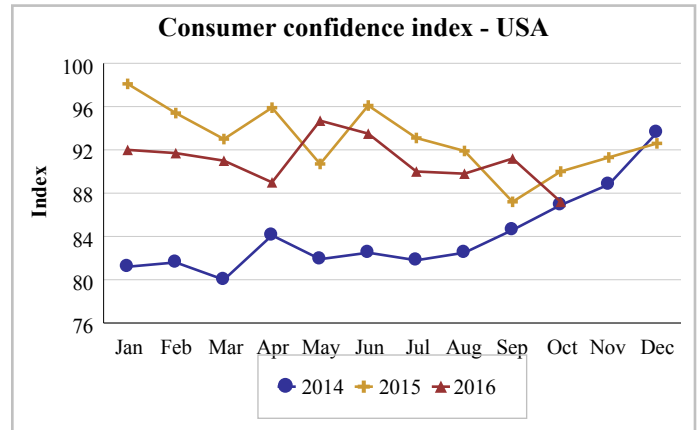


Chart 6.7

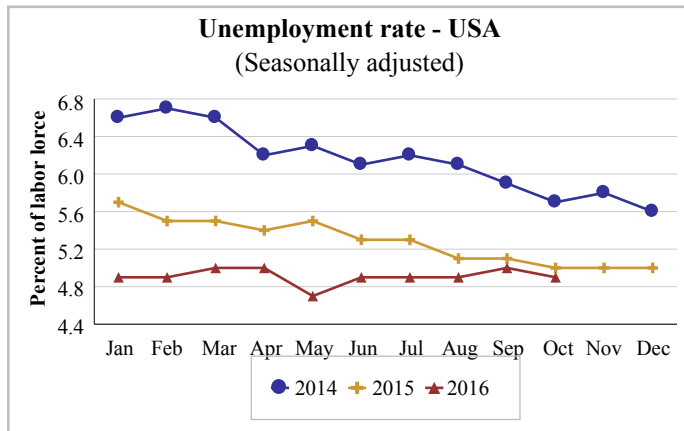


Chart 6.8

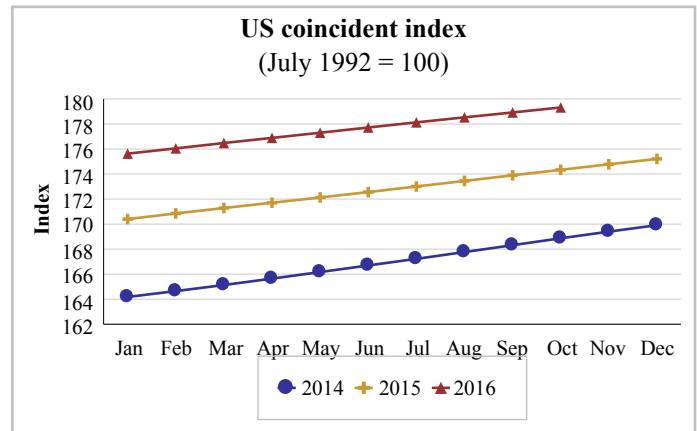


Chart 6.9

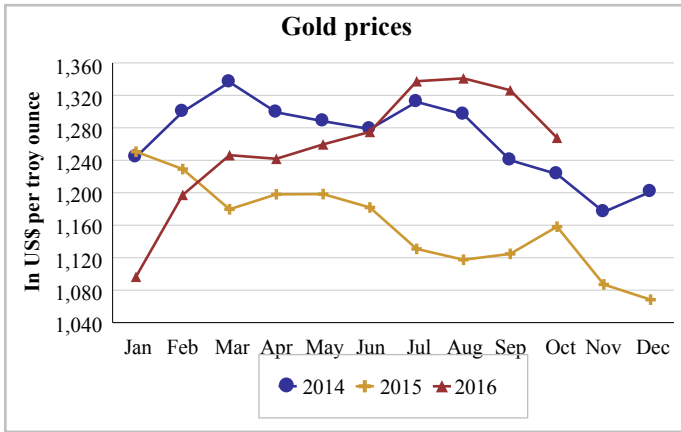


Chart 6.10

